



University of Dundee

What is the impact of diabetes mellitus on radiation induced acute proctitis after radical radiotherapy for adenocarcinoma prostate? A prospective longitudinal study

Alashkham, Abduelmenem; Paterson, Catherine; Hubbard, Stephen; Nabi, Ghulam

Published in:
Clinical and Translational Radiation Oncology

DOI:
[10.1016/j.ctro.2017.02.003](https://doi.org/10.1016/j.ctro.2017.02.003)

Publication date:
2019

Licence:
CC BY-NC-ND

Document Version
Peer reviewed version

[Link to publication in Discovery Research Portal](#)

Citation for published version (APA):

Alashkham, A., Paterson, C., Hubbard, S., & Nabi, G. (2019). What is the impact of diabetes mellitus on radiation induced acute proctitis after radical radiotherapy for adenocarcinoma prostate? A prospective longitudinal study. *Clinical and Translational Radiation Oncology*, 14(Jan. 2019), 59-63.
<https://doi.org/10.1016/j.ctro.2017.02.003>

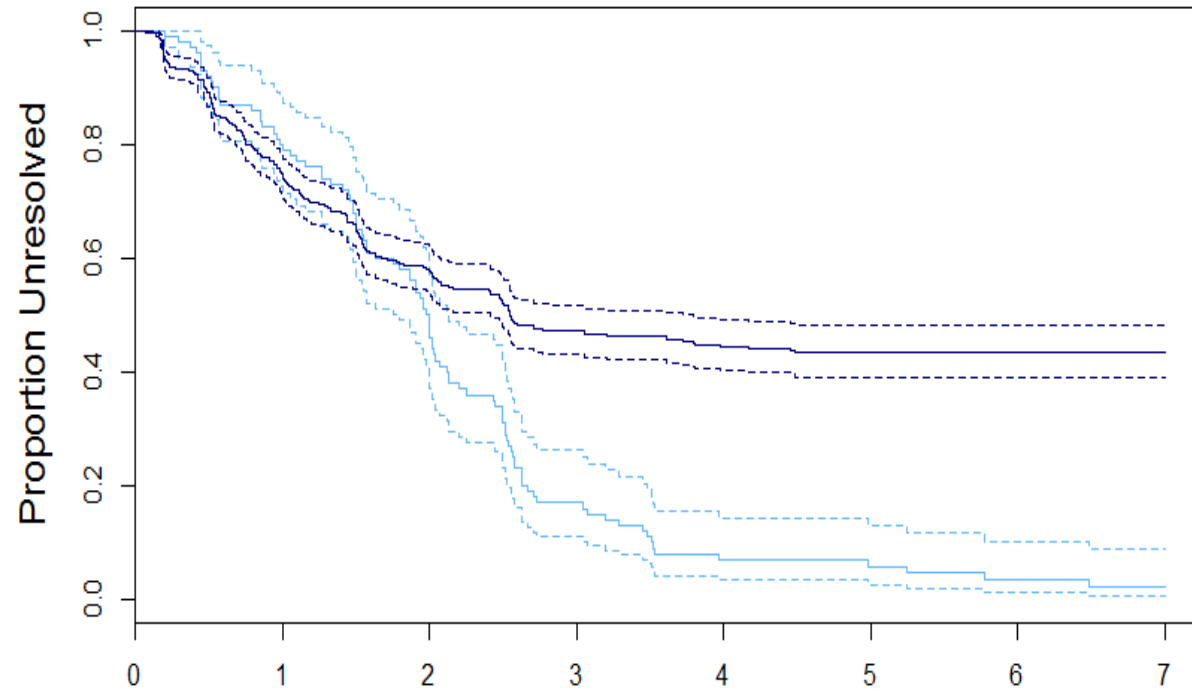
General rights

Copyright and moral rights for the publications made accessible in Discovery Research Portal are retained by the authors and/or other copyright owners and it is a condition of accessing publications that users recognise and abide by the legal requirements associated with these rights.

- Users may download and print one copy of any publication from Discovery Research Portal for the purpose of private study or research.
- You may not further distribute the material or use it for any profit-making activity or commercial gain.
- You may freely distribute the URL identifying the publication in the public portal.

Take down policy

If you believe that this document breaches copyright please contact us providing details, and we will remove access to the work immediately and investigate your claim.



Year	0	1	2	3	4	5	6	7
Diabetic at Risk	100	78	59	46	44	42	42	42
Non-diabetic at risk	616	505	271	111	66	49	12	6

Figure 1: Proportion of cases remaining unresolved at the end of the study for diabetic (upper, dark blue line) men, and non-diabetic (lower, light blue line) men. Dashed lines indicate 95% confidence envelopes for the fitted lines. The table below indicates the number in each category remaining at risk in each time period