



University of Dundee

A pilot randomised controlled trial of a multimodal supportive care (ThriverCare) intervention for managing unmet supportive care needs in men with metastatic prostate cancer on hormonal treatment and their partner/caregivers

Paterson, Catherine; Primeau, Charlotte; Nabi, Ghulam

Published in:
European Journal of Oncology Nursing

DOI:
[10.1016/j.ejon.2018.10.007](https://doi.org/10.1016/j.ejon.2018.10.007)

Publication date:
2018

Licence:
CC BY-NC-ND

Document Version
Peer reviewed version

[Link to publication in Discovery Research Portal](#)

Citation for published version (APA):

Paterson, C., Primeau, C., & Nabi, G. (2018). A pilot randomised controlled trial of a multimodal supportive care (ThriverCare) intervention for managing unmet supportive care needs in men with metastatic prostate cancer on hormonal treatment and their partner/caregivers. *European Journal of Oncology Nursing*, 37, 65-73.
<https://doi.org/10.1016/j.ejon.2018.10.007>

General rights

Copyright and moral rights for the publications made accessible in Discovery Research Portal are retained by the authors and/or other copyright owners and it is a condition of accessing publications that users recognise and abide by the legal requirements associated with these rights.

Take down policy

If you believe that this document breaches copyright please contact us providing details, and we will remove access to the work immediately and investigate your claim.

Final published version available in *European Journal of Oncology Nursing* via DOI [10.1016/j.ejon.2018.10.007](https://doi.org/10.1016/j.ejon.2018.10.007)

Figure 1. Flow diagram of the progress through the phases of a parallel randomised trial of two groups (that is, enrolment, intervention allocation, follow-up, and data analysis)

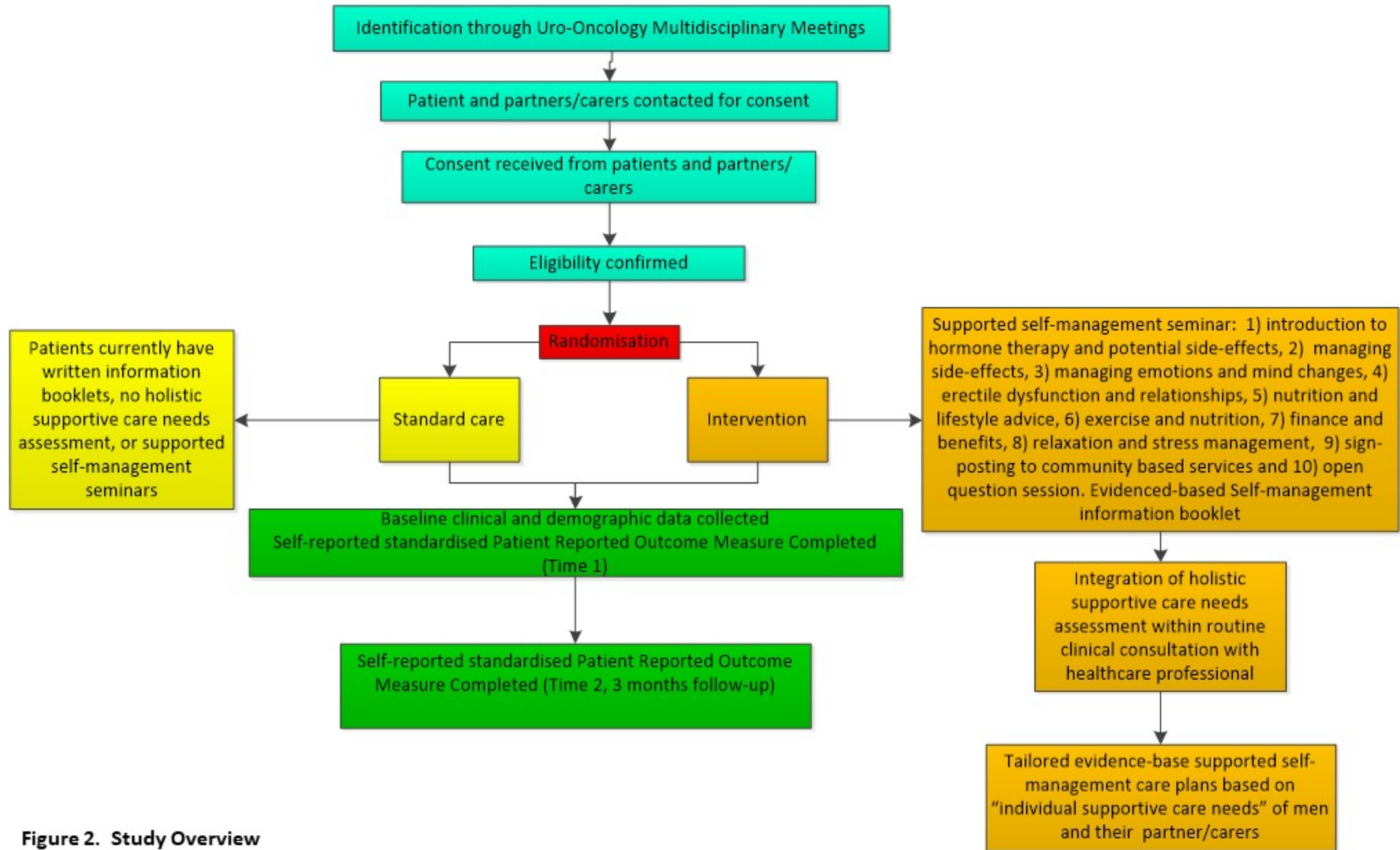


Figure 2. Study Overview

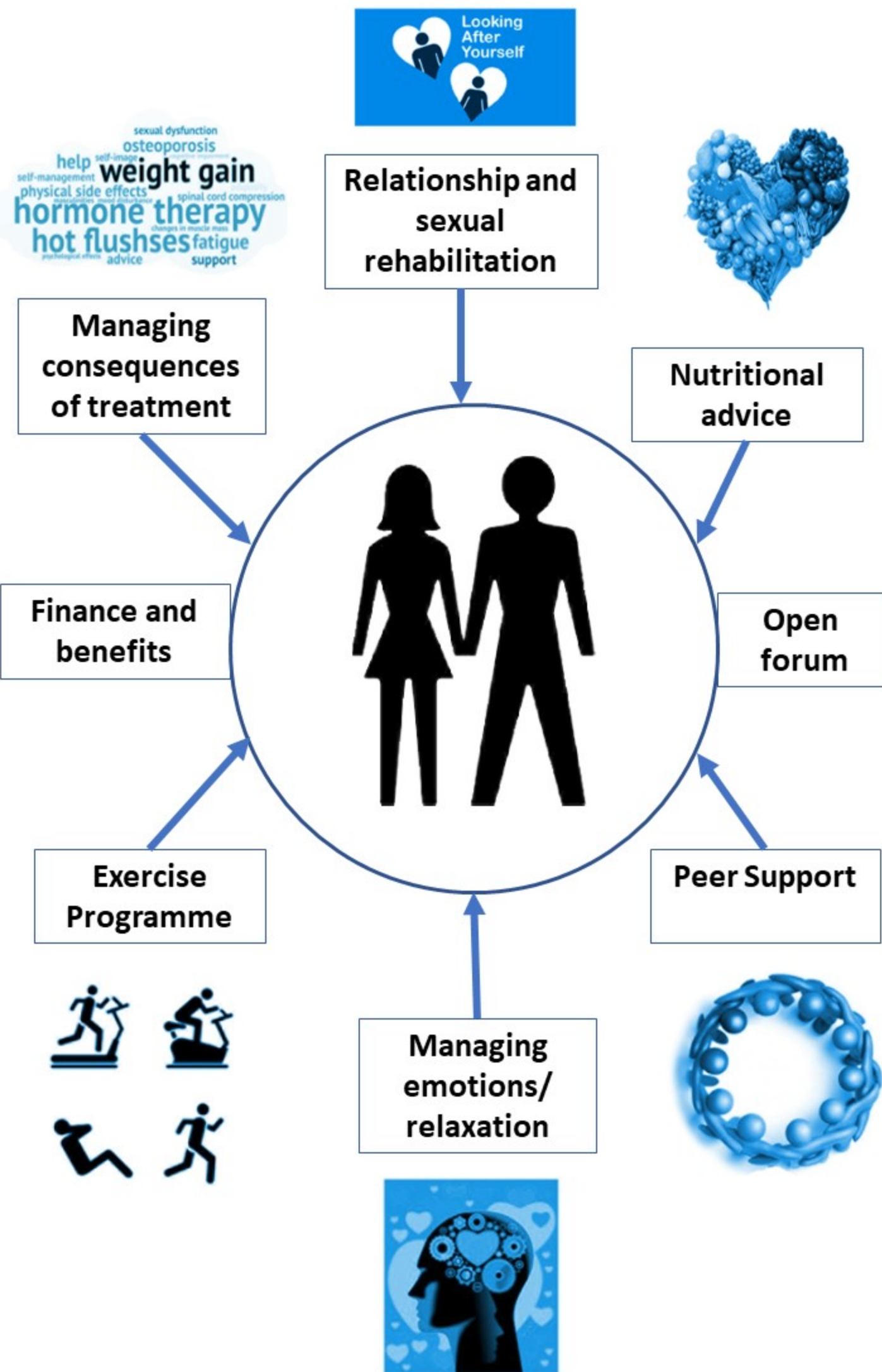


Figure 3. Thematic Content of Group-Base Seminar

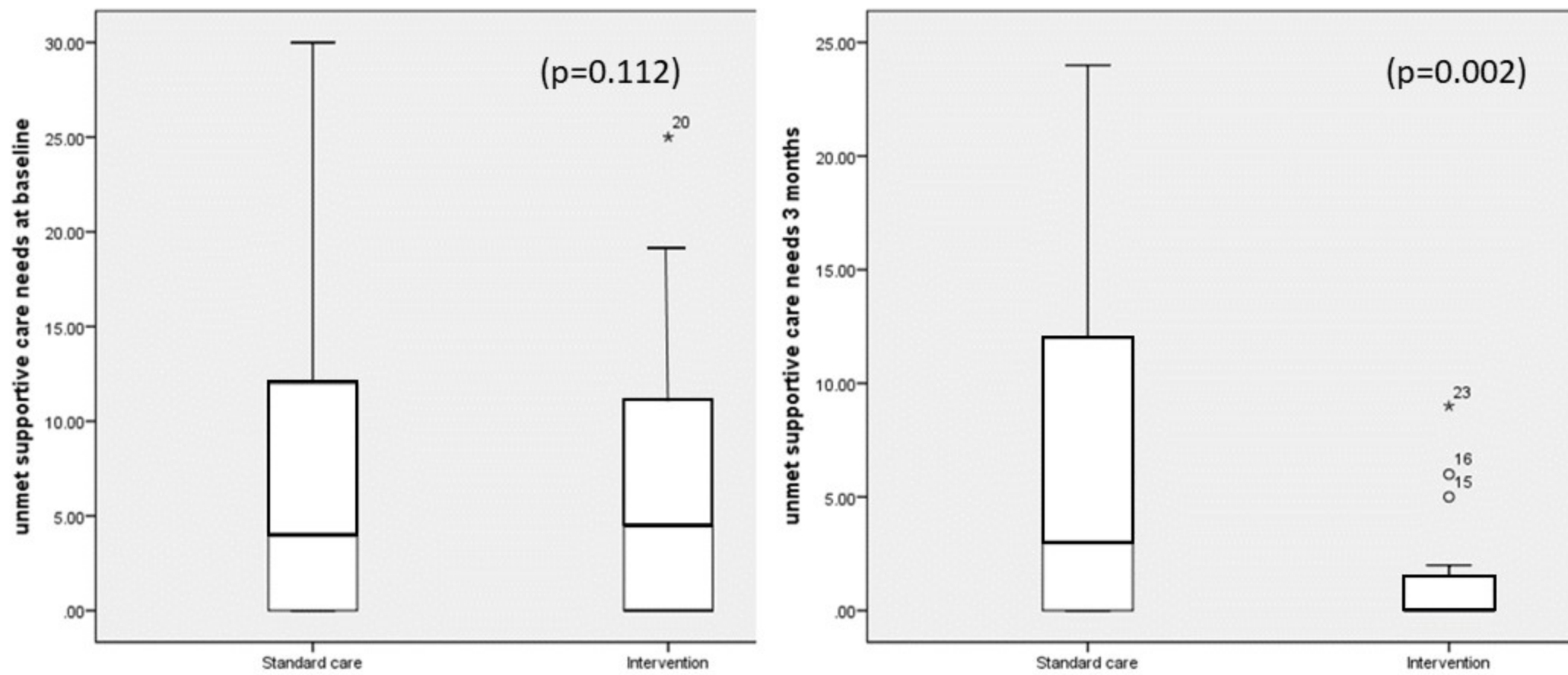


Figure 4. Prevalence of unmet supportive care needs at baseline and 3 months