



**University of Dundee**

**Clusterin accumulates in synapses in Alzheimer's disease and is increased in Apolipoprotein E4 carriers**

Jackson, Rosemary J.; Rose, Jamie; Tulloch, Jane; Henstridge, Christopher; Smith, Colin; Spires-Jones, Tara L.

*Published in:*  
Brain Communications

*DOI:*  
[10.1093/braincomms/fcz003](https://doi.org/10.1093/braincomms/fcz003)

*Publication date:*  
2019

*Licence:*  
CC BY

*Document Version*  
Publisher's PDF, also known as Version of record

[Link to publication in Discovery Research Portal](#)

*Citation for published version (APA):*

Jackson, R. J., Rose, J., Tulloch, J., Henstridge, C., Smith, C., & Spires-Jones, T. L. (2019). Clusterin accumulates in synapses in Alzheimer's disease and is increased in Apolipoprotein E4 carriers. *Brain Communications*, 1(1), 1-12. <https://doi.org/10.1093/braincomms/fcz003>

**General rights**

Copyright and moral rights for the publications made accessible in Discovery Research Portal are retained by the authors and/or other copyright owners and it is a condition of accessing publications that users recognise and abide by the legal requirements associated with these rights.

- Users may download and print one copy of any publication from Discovery Research Portal for the purpose of private study or research.
- You may not further distribute the material or use it for any profit-making activity or commercial gain.
- You may freely distribute the URL identifying the publication in the public portal.

**Take down policy**

If you believe that this document breaches copyright please contact us providing details, and we will remove access to the work immediately and investigate your claim.

# BRAIN COMMUNICATIONS

## Clusterin accumulates in synapses in Alzheimer's disease and is increased in apolipoprotein E4 carriers

Rosemary J. Jackson,<sup>1,2</sup> Jamie Rose,<sup>1</sup> Jane Tulloch,<sup>1</sup> Chris Henstridge,<sup>1,3</sup> Colin Smith<sup>4</sup> and Tara L. Spires-Jones<sup>1</sup>

One of the major challenges in developing effective therapeutic strategies for Alzheimer's disease is understanding how genetic risk factors contribute to neurodegeneration. The apolipoprotein epsilon 4 isoform (*APOE4*) and variants in the *Clusterin* (*CLU*) gene (also known as apolipoprotein J) are associated with increased risk of developing Alzheimer's. Our previous work demonstrated that *APOE4* exacerbates synapse degeneration and synaptic accumulation of toxic oligomeric amyloid beta in human Alzheimer's and mouse models of disease. Here, we observe clusterin in synapses in human Alzheimer's disease brain. The percentage of synapses containing clusterin is higher in *APOE4* carriers than *APOE3* carriers. Furthermore, we observe oligomeric amyloid beta accumulation within synapses containing clusterin which is also higher in *APOE4* carriers. These data link two genetic risk factors with synapse degeneration in Alzheimer's and support a potential role for clusterin working with *APOE* in causing synaptic damage.

- 1 Centre for Discovery Brain Sciences, UK Dementia Research Institute, University of Edinburgh, Edinburgh, UK
- 2 MassGeneral Institute for Neurodegenerative Diseases, Harvard Medical School, Charlestown, MA, USA
- 3 Division of Systems Medicine, Neuroscience, Ninewells Hospital & Medical School, University of Dundee, Dundee, UK
- 4 Centre for Clinical Brain Sciences, University of Edinburgh, Edinburgh, UK

Correspondence to: Tara L. Spires-Jones, DPhil  
Centre for Discovery Brain Sciences, UK Dementia Research Institute  
University of Edinburgh  
1 George Square  
Edinburgh EH8 9JZ, UK  
E-mail: tara.spires-jones@ed.ac.uk

**Keywords:** Alzheimer; synapse; clusterin; apolipoprotein E; array tomography

**Abbreviations:** AD = Alzheimer's Disease; A $\beta$  = amyloid beta; *APOE* for gene, ApoE for protein = Apolipoprotein E

### Introduction

Alzheimer's disease, a devastating neurodegenerative disease, is characterized neuropathologically by the presence of amyloid beta (A $\beta$ ) plaques and tangles made of hyperphosphorylated and misfolded tau, as well as gross neuron and synapse loss in affected areas. Of these hallmarks, it

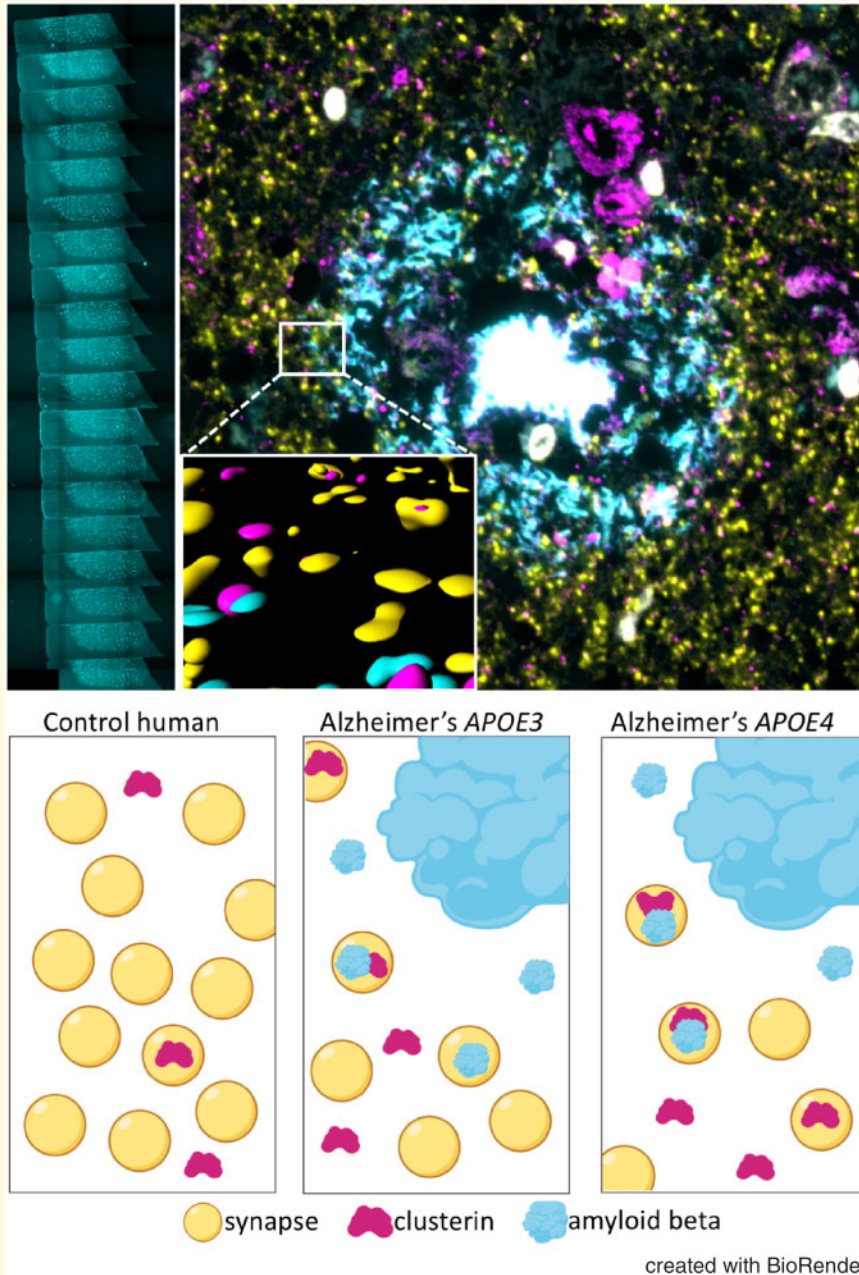
is synapse loss that correlates most strongly with the cognitive decline experienced by people living with Alzheimer's disease (Spires-Jones and Hyman, 2014). Data from animal models of Alzheimer's disease demonstrate that dysfunction of synapses and disrupted synaptic plasticity are key components of neurodegeneration in Alzheimer's disease (Crimins *et al.*, 2013). Investigating

Received April 18, 2019. Revised June 03, 2019. Accepted June 10, 2019. Advance Access publication June 24, 2019

© The Author(s) (2019). Published by Oxford University Press on behalf of the Guarantors of Brain.

This is an Open Access article distributed under the terms of the Creative Commons Attribution License (<http://creativecommons.org/licenses/by/4.0/>), which permits unrestricted reuse, distribution, and reproduction in any medium, provided the original work is properly cited.

## Graphical Abstract



understanding of the pathological pathways that are initiated by this disease.

Although most cases of Alzheimer's disease are not directly heritable, genetic risk factors have been identified, the strongest of which is the epsilon 4 isoform of apolipoprotein E (*APOE4*). The *APOE4* allele has been shown to increase the risk of Alzheimer's disease in a dose-dependent manner when compared with the more common *APOE3* allele whereas the rarer *APOE2* allele is protective (Corder *et al.*, 1993; Corder and Roses, 1996). The possession of two copies of *APOE4* has been shown to not only increase the chance of getting

ical onset to 68 years of age down from 84 (Corder *et al.*, 1993). *APOE4* has also been shown to affect the speed of cognitive decline in both Alzheimer's disease individuals as well as having an effect on the cognitive function of non-demented older adults (Schiepers *et al.*, 2012; Lim *et al.*, 2015).

Our previous work has shown that in both a mouse model of Alzheimer's disease and human post-mortem tissue from Alzheimer's disease individuals synapse density is decreased inside the  $A\beta$  plaque core and the  $A\beta$  oligomer containing halo. This loss of synapse density returns to near control levels when greater than 35  $\mu\text{m}$  from the

plaque halo (Koffie *et al.*, 2009, 2012). Furthermore, we saw a significantly lower density of synapses near plaques in APOE4 carriers compared with APOE3 carriers and the density of synapses far from plaques was also significantly lower (Koffie *et al.*, 2012). We have recently completed a systematic literature search and comprehensive review of the published papers relating ApoE to neurodegeneration, inflammation and/or the spread of pathological proteins through the brain (Tzioras *et al.*, 2019). The review of the 108 papers that matched our inclusion criteria shows strong evidence in the field implicating APOE4 in synapse degeneration, neurodegeneration and inflammation and highlighted the need for a better understanding of the mechanisms through which APOE affects synapse degeneration. One potential mechanism leading from APOE4 to synapse loss is via interacting with other genetic risk factors to influence accumulation of toxic oligomers of A $\beta$  in synapses.

Genome wide association studies over the past decade uncovered additional risk factors to APOE4 including TREM2, PICALM and CLU (Harold *et al.*, 2009; Guerreiro *et al.*, 2013). Clusterin, also called apolipoprotein J, is the second most abundant apolipoprotein in the human brain and has crucial roles in trafficking and clearance of A $\beta$  similar to the role played by ApoE (Nuutinen *et al.*, 2009). Indeed, there are many parallels between clusterin and ApoE that make an interaction between them of interest, not least of which is that both have been shown to act as a modulator of multiple pathways of interest during diseases and aging including; glucose metabolism, transport of cholesterol, amyloid beta trafficking and regulation of the immune system (Hakkoum *et al.*, 2008; Park *et al.*, 2014; Foster *et al.*, 2019).

In this study, we tested the hypothesis that clusterin and ApoE4 work together to cause synapse degeneration in Alzheimer's disease by increasing accumulation of oligomeric amyloid beta at synapses. To achieve this, we isolated synaptoneuroosomes from post-mortem tissue of Alzheimer's disease and non-demented control individuals of known APOE genotypes which were then probed for clusterin levels. We also used the high-resolution imaging technique array tomography to further assess the impact of ApoE4 and Alzheimer's disease on the synaptic localization of A $\beta$  and clusterin and the related impact on the loss of synaptic density in Alzheimer's disease. We observe accumulation of clusterin in synapses which is higher in APOE4 carriers than APOE3 carriers.

## Materials and methods

All materials were purchased from Sigma-Aldrich unless otherwise stated.

### Human subjects

Tissue from superior temporal cortex, Brodmann Area 41/42 of human subjects with Alzheimer's disease or no

neurological phenotype was used for this study. Table 1 shows characteristics of the human subjects.

Use of human tissue for post-mortem studies was reviewed and approved by the Edinburgh Brain Bank ethics committee and the medical research ethics committee (the Academic and Clinical Central Office for Research and Development, a joint office of the University of Edinburgh and NHS Lothian, approval number 15-HV-016). The Edinburgh Brain Bank is a Medical Research Council funded facility with research ethics committee (REC) approval (11/ES/0022).

### APOE genotyping

DNA was extracted from ~25 mg of cerebellum tissue sampled from each case using the QIAamp DNA mini kit (Qiagen, Hilden, Germany) according to manufacturer's instructions. Polymerase chain reaction (PCR) was performed on the extracted DNA. PCR using Master mix (Promega, Madison, WI) and contained 1  $\mu$ M of primer and 10% DMSO. The forward primer was 5'-taagcttg-cacggctgtccaagg-3' and the reverse primer 5'-aca-gaattcgccccggcctgtactgccc-3'. Pure APOE  $\epsilon$ 2, APOE  $\epsilon$ 3 and APOE  $\epsilon$ 4 DNA were amplified by PCR to use as positive controls. The reactions were then heated to 94°C for 10 min before being cycled 32 times in a thermal cycler (Thermo Fisher Scientific, Waltham, MA). The cycle consisted of 30s of denaturing at 94°C, 30s of annealing at 56°C and then 1 min of elongation at 72°C.

The product from PCR was then digested with the restriction enzyme HhaI (New England Biolabs, Ipswich, MA) overnight at 37°C. Digested DNA was then loaded onto Novex TBE 20% pre-cast gels with 15 wells (Thermo Fisher Scientific, Waltham, MA) and separated by size using electrophoresis for 2 h at 200 V. Gels were then removed from the cassette incubated with SYBR safe DNA Gel Stain (Thermo Fisher Scientific, Waltham, MA) and visualized using UV light on a gene genius bio imaging system (Syngene, Cambridge, UK). The banding pattern indicated APOE genotype.

### Synaptoneurosome isolations and western blotting

Synaptoneuroosomes and crude homogenate preparations were biochemically isolated according to Tai *et al.* (2012). Approximately 200 mg of fresh-frozen brain tissue from human Alzheimer's disease and control temporal cortex was homogenized in a glass homogenizer with 1 ml ice-cold buffer A (5 mmol/L KCl, 1 mmol/L MgCl<sub>2</sub>, 25 mmol/L HEPES pH 7.5, 120 mmol/L NaCl and 2 mmol/L CaCl<sub>2</sub>), supplemented with 2 mmol/L DTT, protease inhibitors (cOmplete mini, Roche, Basel, Switzerland), and phosphatase inhibitors (Millipore, Billerica, MA). Homogenates were filtered through two layers of 80- $\mu$ m nylon filters (Millipore, Billerica, MA). A solution of 200  $\mu$ l of this filtered homogenate was mixed

**Table 1** Human subject characteristics

Case ID	Diagnosis	APOE genotype	age (range)	sex (m,f)	Braak stage	PMI (hours ± stdev)
<b>cases used for western blot</b>						
20122	non-demented control	3/3	59	M	0	74
14395	non-demented control	3/3	74	F	0	41
19686	non-demented control	3/3	77	F	I	75
22612	non-demented control	3/3	61	M	0	70
001.26475	non-demented control	3/3	78	M	I	39
24340	non-demented control	3/3	53	M	0	53
001.28406	non-demented control	3/3	79	M	II	72
001.28793	non-demented control	3/3	79	F	II	72
001.28402	non-demented control	3/3	79	M	I	49
<b>GROUP</b>	<b>n=9</b>		<b>59 (53-79)</b>	<b>6,3</b>	<b>I</b>	<b>74 ± 15</b>
15221	non-demented control	4/3	53	M	0	114
15809	non-demented control	4/3	58	M	0	90
20593	non-demented control	4/3	60	M	0	52
16425	non-demented control	4/3	61	M	0	99
001.2555	non-demented control	4/3	74	M	0	66
22629	non-demented control	4/3	59	F	0	53
<b>GROUP</b>	<b>n=6</b>		<b>61 (53-74)</b>	<b>5,1</b>	<b>0</b>	<b>79 ± 26</b>
19994	Alzheimer's disease	3/3	87	F	VI	89
15258	Alzheimer's disease	3/3	65	M	VI	80
001.19595	Alzheimer's disease	3/3	87	M	VI	58
001.28410	Alzheimer's disease	3/3	62	F	VI	109
22223	Alzheimer's disease	3/3	87	F	IV	83
24527	Alzheimer's disease	3/3	81	M	V	74
001.28771	Alzheimer's disease	3/3	85	M	VI	91
001.28785	Alzheimer's disease	3/3	78	F	No staging	76
<b>GROUP</b>	<b>n=8</b>		<b>79 (62-87)</b>	<b>4,4</b>	<b>VI</b>	<b>83 ± 15</b>
10591	Alzheimer's disease	4/3	86	M	VI	76
15810	Alzheimer's disease	4/3	73	F	VI	96
001.15811	Alzheimer's disease	4/3	81	F	VI	41
15259	Alzheimer's disease	4/3	87	F	VI	28
23394	Alzheimer's disease	4/3	88	F	V	59
001.24322	Alzheimer's disease	3/4	80	M	VI	101
24526	Alzheimer's disease	3/4	79	M	VI	65
19690	Alzheimer's disease	3/4	57	M	VI	58
001.25739	Alzheimer's disease	3/4	85	F	VI	45
001.26718	Alzheimer's disease	3/4	78	M	VI	74
001.26732	Alzheimer's disease	3/4	76	M	VI	66
<b>GROUP</b>	<b>n=11</b>		<b>79 (57-88)</b>	<b>6,5</b>	<b>VI</b>	<b>64 ± 22</b>
<b>cases used for array tomography</b>						
001.28406	non-demented control	3/3	79	M	II	72
001.26495	non-demented control	3/3	78	M	I	39
001.28793	non-demented control	3/3	79	F	II	72
19686	non-demented control	3/3	77	F	I	75
001.28797	non-demented control	3/3	79	M	0	57
<b>GROUP</b>	<b>n=5</b>		<b>78 (77-79)</b>	<b>3,2</b>	<b>I</b>	<b>63 ± 15</b>
1424	Alzheimer's disease	3/3	89	M	VI	25
001.28410	Alzheimer's disease	3/3	62	F	VI	109
001.28771	Alzheimer's disease	3/3	85	M	VI	91
24527	Alzheimer's disease	3/3	81	M	V	74
<b>GROUP</b>	<b>n=4</b>		<b>79 (62-89)</b>	<b>3,1</b>	<b>VI</b>	<b>74 ± 36</b>
001.25739	Alzheimer's disease	4/3	85	F	VI	45
001.26718	Alzheimer's disease	4/3	78	M	VI	74
24526	Alzheimer's disease	4/3	79	M	VI	65
19690	Alzheimer's disease	4/3	57	M	VI	58
001.26732	Alzheimer's disease	4/3	76	M	VI	66
001.29521	Alzheimer's disease	4/3	95	M	VI	96
001.29135	Alzheimer's disease	4/3	90	M	VI	73
<b>GROUP</b>	<b>n=7</b>		<b>80 (57-95)</b>	<b>6,1</b>	<b>VI</b>	<b>68 ± 16</b>

with 200  $\mu$ l water and 70  $\mu$ l 10% sodium dodecyl sulphate (SDS) and boiled to prepare the crude homogenate fraction.

To prepare synaptoneurosomes, the remainder of the filtered homogenate was passed through a 5- $\mu$ m membrane filter (Durapore, Millipore, Billerica, MA) before being centrifuged at 1000 G for 10 min. The supernatant was removed, and the pellet resuspended in 200  $\mu$ l buffer A and centrifuged again at 1000 G for 5 min. The supernatant was discarded and the synaptoneurosomes pellets were snap frozen on dry ice and then transferred to  $-80^{\circ}\text{C}$ .

Synaptoneurosomes pellets were resuspended in 400  $\mu$ l of Buffer B (50 mmol/L Tris [pH 7.5], 1.5% SDS and 2 mmol/L DTT) and boiled for 5 min. 10% SDS was added to the supernatant fraction to bring it up to 1.5% SDS and this was also boiled for 5 min to prepare for western blotting. Protein concentration in each sample was estimated by bicinchoninic acid (BCA) assay.

Synaptoneurosomes or crude homogenate preparations were loaded onto 15 well NuPAGE 4–12% Bis-Tris pre-cast polyacrylamide gels (Invitrogen, Paisley, UK) along with molecular weight marker (Li-Cor, Cambridge, UK). Proteins were transferred to nitrocellulose membranes (Bio-Rad, Hemel Hempstead, UK), which were probed with the following primary antibodies:  $\beta$ -actin (ab8226, Abcam, 1:2000), Synaptophysin (ab8049, Abcam, 1:10 000), GAPDH (ab8245, Abcam, 1:2000), Histone H3 (1:1000, ab1791, Abcam), PSD95 (1:1000, D27E11, Cell Signaling Technology) and clusterin (1:500, sc-8354, Santa Cruz Biotechnology). After rinsing off unbound primary antibodies, membranes were incubated with 680 and 800 IR dye labelled secondary antibodies (1:50 000, LI-COR Biosciences) and visualized on an odyssey infrared system (LI-COR Biosciences).

## Array tomography

Tissue from the BA41/42 area of the cortex was embedded as described in Kay *et al.* (2013). In brief, post-mortem samples were collected at autopsy, cut into small cortical blocks and fixed in 4% paraformaldehyde for 2–3 h. Samples were then dehydrated in ascending concentrations of ethanols and incubated in LR white resin overnight. Cortical blocks were then baked in LR white resin which was polymerized at  $56^{\circ}\text{C}$  for 24 h. Tissue blocks were sectioned into ribbons of 70 nm serial sections which were collected on gelatin-coated coverslips. The ribbons were stained with primary and secondary antibodies and the same region of interest imaged in each section of the ribbon. Antibodies from the first day of staining were eluted off of the ribbon in stripping buffer (0.2 m NaOH, 0.02% SDS in  $\text{dH}_2\text{O}$ ) then ribbons were re-probed with a second set of antibodies and images were taken in the same regions of interest as day 1. The primary antibodies on day 1 was 1C22 [1:50, kind gift of Dominic Walsh (Yang *et al.*, 2015)]. Primary

antibodies used on day 2 were mouse anti-synaptophysin (1:50, ab8049, Abcam), and goat anti-clusterin (1:50, sc-6420, Santa Cruz Biotechnologies). The Alexa Fluor conjugated secondary antibody used on day 1 was donkey anti-mouse 594 (Invitrogen). Secondary antibodies used on day 2 were donkey anti-mouse 594 (A31571) and donkey anti-goat 594 (A11058, Invitrogen). All secondary antibodies were used at a 1:50 dilution and DAPI was used on both days to label nuclei. Images were acquired with a Zeiss Axio Imager Z2 upright microscope equipped with a CoolSnap digital camera using a 63 $\times$  oil objective. Images were acquired from the same location on each serial section of the ribbon. Image stacks were aligned and regions of interest in the neuropil selected in image J using custom macros and the multistack reg plugin (Thevenaz *et al.*, 1998; Micheva *et al.*, 2010). Custom MATLAB scripts were used to detect synaptic puncta and determine whether clusterin and/or  $\text{A}\beta$  staining was present in each synapse.

## Statistical analysis

The experimental unit for all experiments was a mean or median for each subject. The experimenter was blind to condition during image analysis. Numbers of subjects in each group can be found in Table 1. Statistics were calculated using graph pad prism (version 7.0c). Normality was tested with the Shapiro–Wilk normality test. For parametric data (western blots and synapse density) one or two-way ANOVA was used to compare groups followed by Tukey's *post hoc* tests between individual pairs of groups. Co-localization data of the percentage of synapses containing  $\text{A}\beta$ , clusterin or both were not normally distributed thus were analysed with Kruskal–Wallis tests followed by *post hoc* Mann–Whitney *U* test between pertinent groups.

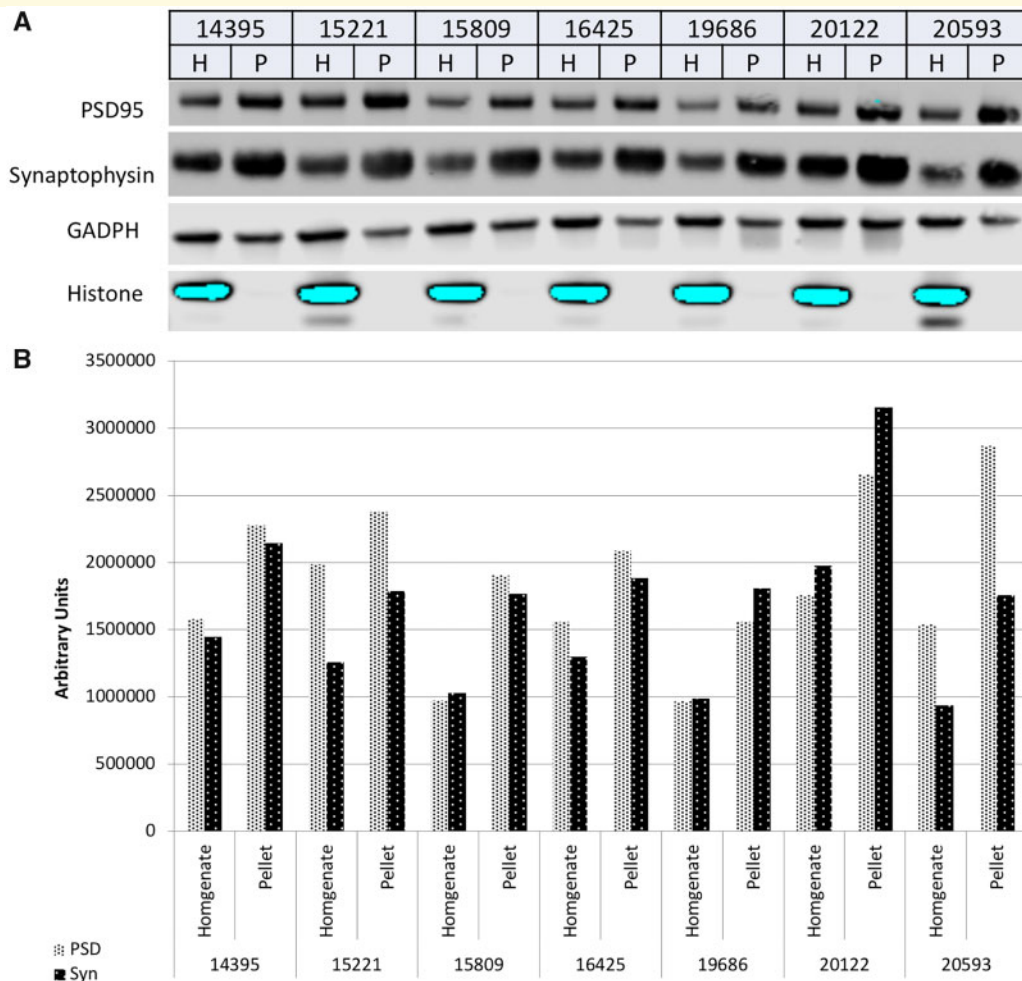
## Data availability

Data from Western blot experiments for each case can be found in Supplementary Table 1, and data from array tomography experiments can be found in Supplementary Table 2. Raw images are available from the corresponding author upon request. Custom image analysis macros for array tomography can be downloaded from <https://doi.org/10.7488/ds/2268>

## Results

### Clusterin is increased in the Alzheimer's disease APOE4 synapse but not in crude homogenate

To investigate the effects of ApoE4 on the amount of clusterin in the synapse, synaptoneurosomes were prepared using a previously described method (Tai *et al.*, 2012).



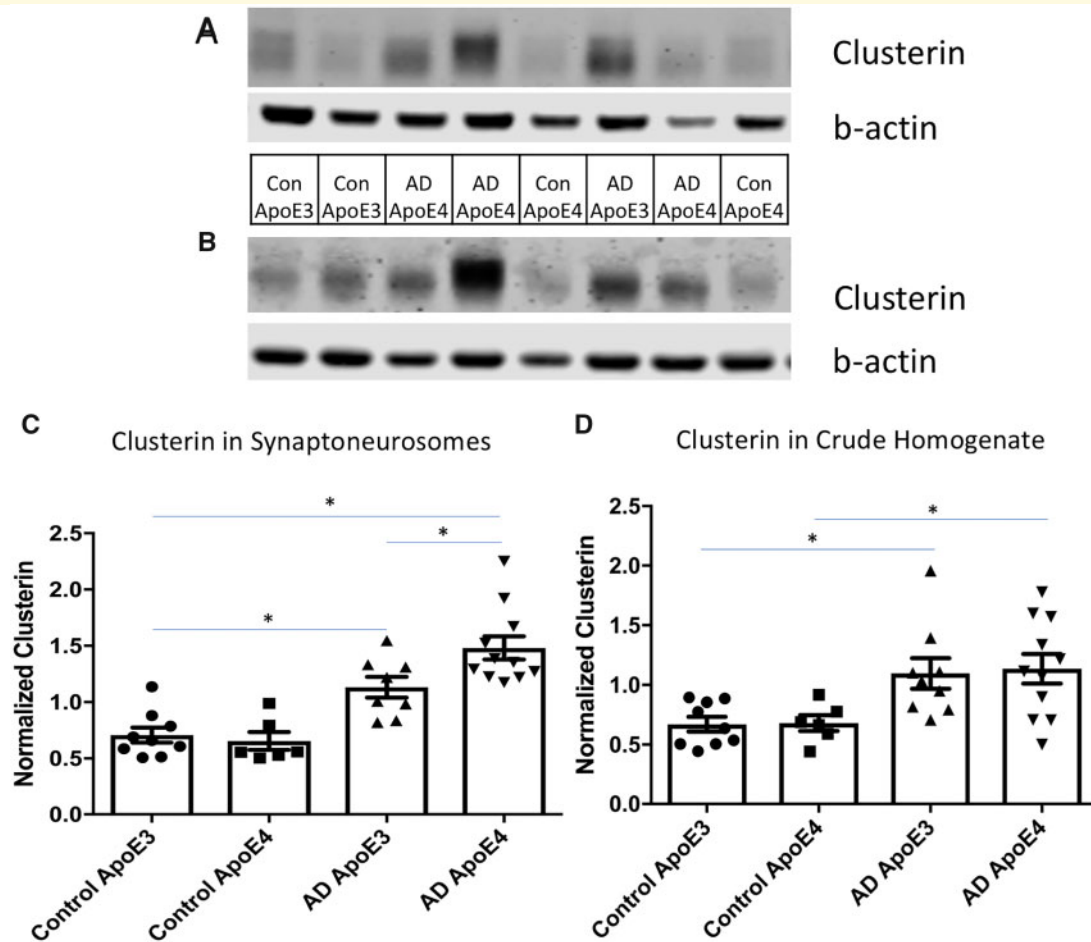
**Figure 1** Preparation of synaptoneurosomes. Crude homogenates (H) and synaptoneurosomes pellets (P) were isolated from temporal cortex of Alzheimer's disease and control subjects. Representative western blots (A) and quantification of synaptic proteins (B) is shown for seven cases (indicated by their BBN ID numbers 14395, 15221, 15809, 16425, 19686, 20122 and 20593). Enrichment of synaptic proteins (synaptophysin and PSD95) and exclusion of nuclear histone protein in the synaptoneurosomes pellets compared with the homogenates was confirmed for each case included in the study. GAPDH is used to ensure equal protein loading.

The synaptically enriched fraction was probed for synaptophysin (for pre-synapses) and PSD95 (for post-synapses) to ensure enrichment of synaptic elements as well as histone H3 to ensure exclusion of a nuclear marker (Fig. 1). Samples which contained histone or did not show enrichment of the synapse were either remade or discarded from the study.

To determine the quality of protein in our human brain samples, we assessed protein degradation using the 'HUSPIR' ratio or (Bayés et al., 2014). To find this value, synaptoneurosomes were run on western blot and probed with an antibody against NMDAR2B antibody. This recognizes two to three bands, the full length protein at 170 kDa and degradation products at 150 kDa and below. This degradation product is only found post-mortem and not in autopsy tissue thus comparing these two bands is a good indication of post-mortem protein integrity. Samples with a degradation ratio of

less than 1 were excluded from the study (data not shown).

Western blot analysis of homogenate of temporal cortex from post-mortem brain (Fig. 2A, un-cropped western blots are shown in Supplementary Figs 1 and 2) shows an increase in the amount of clusterin in Alzheimer's disease compared with control, with no effect of APOE genotype on this increase (two-way ANOVA effect of disease  $F(1, 30) = 16.96, P = 0.0003$ , effect of APOE genotype  $F(1, 30) < 0.0001, P = 0.998$ ; Tukey's *post hoc* between control APOE3 and Alzheimer's disease APOE3  $P = 0.0241$ , Tukey's *post hoc* between Control APOE4 and Alzheimer's disease APOE4  $P = 0.0421$ , Fig. 2C). This is consistent with previous studies, although a recent study indicated that clusterin is increased in Alzheimer's disease due in part to its interaction with A $\beta$  plaques (Miners et al., 2017). As A $\beta$  plaques are more prevalent in individuals with an APOE4 genotype one might expect



**Figure 2 Clusterin is increased in the synaptic compartment in Alzheimer's disease with highest levels in APOE4 carriers.**

Western blot (A, B) analysis shows an increased level of clusterin when comparing Control with Alzheimer's disease in both Crude Homogenate (A, C) and in Synaptically enriched preps (B, D). In synapses, there is a further increase in the Alzheimer's disease APOE4 cases compared with Alzheimer's disease APOE3 cases (\*Tukey's *post hoc* tests,  $P < 0.05$ ).

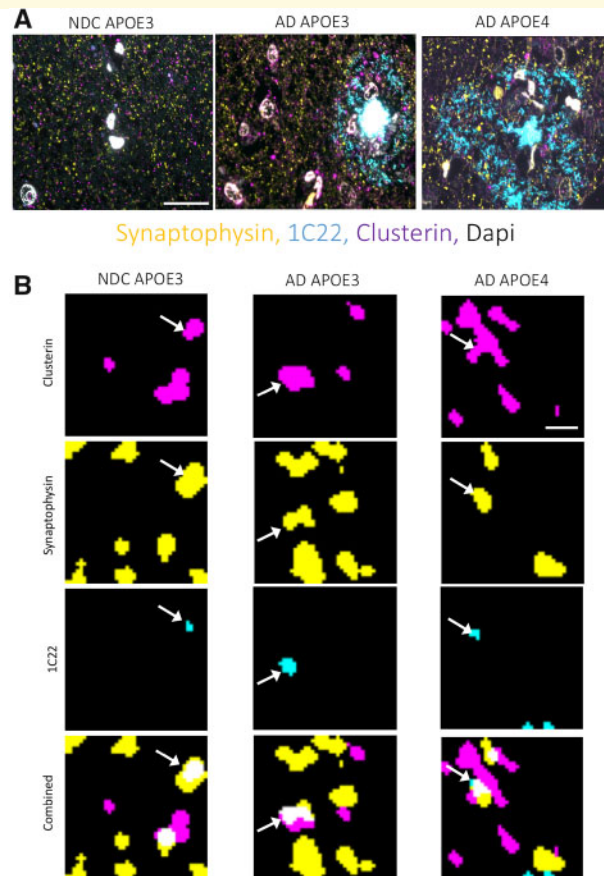
a slight increase in the amount of clusterin in Alzheimer's disease APOE4 cases compared with Alzheimer's disease APOE3 cases (Rebeck *et al.*, 1993). However, this is not seen in our cases, potentially because any effect of APOE4 on clusterin is diluted by the rest of the cellular milieu. In contrast, western blot analysis of synaptoneurosomes shows an increase in clusterin in Alzheimer's disease cases (Fig. 2B, two-way ANOVA effect of disease  $F(1, 30) = 44.24$ ,  $P < 0.0001$ , effect of APOE genotype  $F(1, 30) = 2.48$ ,  $P = 0.126$ , interaction  $F(1, 30) = 4.551$ ,  $P = 0.0412$ , Tukey's *post hoc* between control APOE3 versus Alzheimer's disease APOE3  $P = 0.0137$  and Tukey's *post hoc* between control APOE4 versus Alzheimer's disease APOE4  $P < 0.0001$ ) and a further increase in the Alzheimer's disease APOE4 cases compared with Alzheimer's disease APOE3 (Tukey's *post hoc*  $P = 0.0413$ , un-cropped blots are shown in Supplementary Fig. 2). This indicates that an APOE4 genotype increases the amount of clusterin at remaining synapses in Alzheimer's disease but not

overall in the temporal cortex. Further analysis shows that within the Alzheimer's disease APOE4 cases, more than in any other group, the amount of clusterin found at the synapse is higher than the amount found in the crude homogenate from the same case, indicating that clusterin is increased specifically in the synapse in these cases (Supplementary Fig. 3). Analysis of western blot data for each case can be found in Supplementary Table 1.

### APOE4 is associated with exacerbated synaptic loss and increased synaptic A $\beta$ co-localization in Alzheimer's disease

While western blots allow measurements of protein abundance in synaptoneurosomes, they do not provide detailed information about synapse loss, specific changes

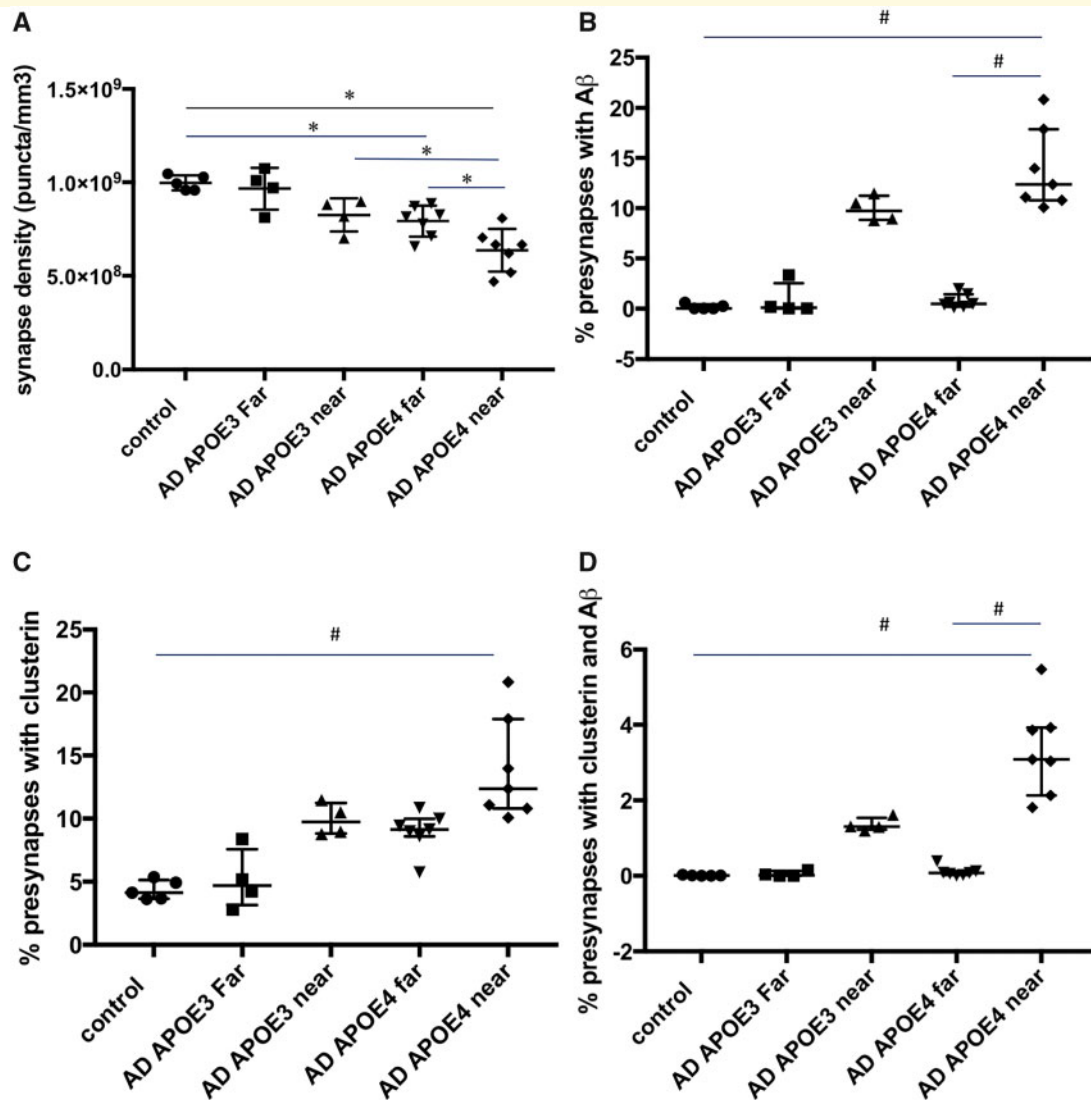




**Figure 3 Representative images of array tomography staining.** Array tomography ribbons from non-demented controls (NDC), Alzheimer's disease *APOE3* and Alzheimer's disease *APOE4* individuals were stained for pre-synapses (synaptophysin, yellow),  $\text{oA}\beta$  (1C22, cyan) and clusterin (magenta). Images shown in (A) are maximum intensity projections of four serial sections (aligned raw images). Images shown in (B) are maximum intensity projections of two serial sections from analysed image stacks that have been thresholded and single section noise removed in MATLAB. Each channel is shown separately with the merge in the bottom image. Arrows indicate synapses containing both clusterin and  $\text{oA}\beta$  staining. Scale bars represent  $15\ \mu\text{m}$  (A) and  $1\ \mu\text{m}$  (B).

in synapses near plaques or the co-localization of multiple proteins within synapses. Thus to test the hypothesis that *APOE* genotype affects the synaptic accumulation of clusterin and  $\text{A}\beta$ , we used the high-resolution array tomography technique (Micheva et al., 2010), which we have optimized for use in human post-mortem tissue (Koffie et al., 2012; Kay et al., 2013). Using this technique, we can observe the co-localization of clusterin and  $\text{A}\beta$  within individual pre-synaptic terminals as well as examining synapse density (Fig. 3). Due to limited sample availability of tissue prepared at autopsy for this specialized technique, we did not have enough subjects for a control *APOE4* group. In a previous study using array tomography, we observed that *APOE4* exacerbates synapse loss near plaques and is associated with increases in the percentage of synapses containing  $\text{A}\beta$  (Koffie et al., 2012). Here, we replicate these findings in a different set of subjects (Fig. 4A and B), and further examine clusterin and  $\text{A}\beta$  in synapses. Regions of interest in the neuropil were

selected from image stacks and divided into two groups, those which were near plaques ( $<10\ \mu\text{m}$  from plaque edge) and those far from plaques ( $>45\ \mu\text{m}$  from plaque edge). Synaptophysin was used as a marker of pre-synaptic terminals. Consistent with our previous study (Koffie et al., 2012), we observe a loss of synapses in Alzheimer's disease compared with control brain, the loss being exacerbated near plaques in *APOE4* cases (one-way ANOVA,  $F(4,22)=14.2$ ,  $P<0.0001$ , *post hoc* Tukey's tests Alzheimer's disease *APOE4* near versus far from plaques  $P=0.032$ , control versus Alzheimer's disease *APOE4* near  $P<0.0001$ ). Further, there is a significant drop in pre-synaptic density near plaques when compared with far from plaques in Alzheimer's disease cases (two-way ANOVA effect of plaque distance,  $F(1, 18)=11.21$ ,  $P=0.0036$ ) and a significant effect of *APOE* genotype on synapse density (two-way ANOVA effect of *APOE* genotype,  $F(1, 18)=16.67$ ,  $P=0.0007$ , Fig. 4A). Also consistent with previous data was the finding that synapses near plaques



**Figure 4 Analysis of synaptic punctate by array tomography.** (A) There is a significant decrease in the pre-synaptic density in Alzheimer's cases near plaques ( $<10\ \mu\text{m}$ ) compared with far from plaques ( $>45\ \mu\text{m}$ ) which is exacerbated by *APOE4* genotype (one-way ANOVA  $F[4, 22] = 14.2, P < 0.0001$ ). (B) There is also a significant increase in the percent of  $A\beta$  (1C22) positive synapses near plaques compared with far from plaques that is most pronounced in E4 cases (Kruskal–Wallis test,  $P = 0.0003$ ). (C) Clusterin in pre-synaptic terminals is increased in Alzheimer's disease *APOE4* carriers (Kruskal–Wallis,  $P = 0.0003$ ). (D) Similarly, the percentage of synapses containing both clusterin and  $A\beta$  is highest in Alzheimer's disease *APOE4* carriers near plaques (Kruskal–Wallis,  $P = 0.0002$ ). (\* $P < 0.05$ , \*\* $P < 0.01$ , \*\*\* $P < 0.0001$  Tukey's *post hoc* test. # $P < 0.05$ , ## $P < 0.01$ , ### $P < 0.001$  *post hoc* Mann–Whitney *U*.) Each symbol represents the mean for a single case in (A) with error bars representing standard deviation. Each symbol in (B–F) represents the median for a single case with the error bars showing inter-quartile ranges.

were significantly more likely to co-localize with  $A\beta$  (Fig. 4B, Kruskal–Wallis test  $\chi^2(4) = 21.18, P = 0.0003$ , *post hoc* Mann–Whitney *U* between Alzheimer's disease *APOE3* near and *APOE3* far  $P = 0.0286$  and between Alzheimer's disease *APOE4* near and *APOE4* far  $P = 0.0006$ ) and that this increase was greater in *APOE4* Alzheimer's disease cases (*post hoc* Mann–Whitney *U* between Alzheimer's disease *APOE3* near versus Alzheimer's disease *APOE4* near  $P = 0.0061$ ). Analysis of array tomography data for each case can be found in Supplementary Table 2.

## **APOE4 is associated with an increased synaptic co-localization of clusterin and increased synaptic co-localization of clusterin and oligomeric $A\beta$**

Array tomography was used to investigate whether the increase in clusterin seen in the synaptoneurosome using proteomics and western blot was associated with accumulation of clusterin and  $A\beta$  within the same synapses.

When the percentage of synapses co-localizing with clusterin was examined, we observed an increase in Alzheimer's disease cases compared with controls with the largest effect near plaques in *APOE4* carriers (Fig. 4C, Kruskal–Wallis test  $\chi^2(4)=21.16$ ,  $P=0.0003$ ; *post hoc* Mann–Whitney *U* between Alzheimer's disease *APOE3* near and *APOE3* far  $P=0.0286$ , between Alzheimer's disease *APOE4* near and *APOE4* far  $P=0.0023$ , between Alzheimer's disease *APOE3* far and Alzheimer's disease *APOE4* far  $P=0.012$ , and between control and *APOE4* far  $P=0.0025$ ).

One of the benefits of array tomography is the ability to strip antibodies and re-probe the same tissue ribbon with different antibodies thus allowing the analysis of the co-localization of several protein markers to the same synapse. We therefore looked at the co-localization of clusterin and  $A\beta$  together at the synapse to see if Alzheimer's disease *APOE4* cases were more likely to have synapses positive for both markers. There is an increase in the percentage of synaptic puncta co-localizing with both  $A\beta$  and clusterin in Alzheimer's disease *APOE4* cases near plaques (Fig. 4D, Kruskal–Wallis test  $\chi^2(4)=21.61$ ,  $P=0.0002$ , *post hoc* Mann–Whitney *U* between Alzheimer's disease *APOE3* near and *APOE3* far  $P=0.0286$ , between Alzheimer's disease *APOE4* near and *APOE4* far  $P=0.0006$  and between Alzheimer's disease *APOE3* near and Alzheimer's disease *APOE4* near  $P=0.0061$ ).

## Discussion

The effects of ApoE in Alzheimer's disease have long been studied but by comparison the study of the related apolipoprotein clusterin has been limited despite it too being a genetic risk factor for the disease. Here, we show by multiple systems in post-mortem tissue that an *APOE4* genotype affects the concentration of clusterin specifically in the synapse and but not in the brain homogenate overall. Moreover, this increase in clusterin is found to coincide with an increase in the amount of  $A\beta$  in the same synapses.

As the second most abundantly expressed apolipoprotein in the brain, clusterin performs many of the same roles as ApoE including the transport of cholesterol and other necessary lipids to the neuron (Dong *et al.*, 2017), thus it is possible that changes in clusterin and ApoE may be related. An *APOE4* genotype has been shown to have an effect on the amount of ApoE in the brain due in part to the increased speed with which ApoE4 is degraded (Riddell *et al.*, 2008). When *ApoE* is knocked out of a mouse line there is an increase in the amount of clusterin mRNA indicating that clusterin can compensate for the loss of ApoE (Stone *et al.*, 1998). Further highlighting a possible compensatory mechanism between ApoE and clusterin is the study by DeMattos *et al.* (2004) which showed only slight changes in plaque load and deposition in PDAPP mice when either *Clusterin* or

*ApoE* was knockout but a much greater effect in the mice where both were knocked out.

The increase in clusterin at the synapse which we observed could be due to a number of factors including neuronal stress. It is known that stress, and specifically  $A\beta$  induced stress, results in an increase in intracellular clusterin and a decrease in extracellular clusterin (Killick *et al.*, 2014). A stress response could help explain the increase in the amount of clusterin in Alzheimer's disease. Adding to this hypothesis is a study showing that clusterin is up-regulated in the cerebrospinal fluid (CSF) of Alzheimer's disease individuals and that higher CSF clusterin was associated with an increase in entorhinal cortex atrophy (Desikan *et al.*, 2014). Although this increase in CSF could be a response to neuron degradation rather than a causative factor it does lead to the question of whether clusterin is involved in  $A\beta$ -mediated synapse loss. A question raised by our data is whether an increase in clusterin has a protective or a detrimental effect on the synapse. Clusterin can bind  $A\beta$ , prevent fibrillization of  $A\beta$ , and prevent the loss of long-term potentiation and memory when injected into a rat, which points towards a protective role for clusterin in Alzheimer's disease (Casella *et al.*, 2013). On the other hand, knockout of clusterin in rat primary neurons prevented  $A\beta$ -induced neuronal death which indicates the detrimental effects of  $A\beta$  may be at least in part due to clusterin (Killick *et al.*, 2014). However, it is worth noting the limitations of these cell death data since supraphysiological levels of  $A\beta$  are required to induce cell death *in vitro*. Furthermore *in vivo*, pathological tau, not  $A\beta$ , is thought to drive cell death. *In vitro* studies have shown that incubation of  $A\beta$  fibrils and  $A\beta$  oligomers with clusterin causes decreased uptake of both fibrils and oligomers by microglia and just oligomers by astrocytes (Mulder *et al.*, 2014). This could lead to the increased deposition of  $A\beta$  as described by DeMattos *et al.*, but could also increase the amount of  $A\beta$  bound to apolipoproteins which could then target that  $A\beta$  to the synapse causing an increase in synapse degeneration.

Clusterin is known to bind  $A\beta$  in the extracellular space and prevent fibrillization (Casella *et al.*, 2013). This could indicate that the increase in  $A\beta$  and clusterin that we observe at the synapse is due to an internalization of clusterin bound to  $A\beta$ . However, other studies have shown that intracellular clusterin is increased following  $A\beta$  application indicating that up-regulation of intracellular clusterin is a response to  $A\beta$  accumulation in the synapse (Killick *et al.*, 2014). Of course, it is possible that both occur in the cell and that cellular stress caused by  $A\beta$  at the synapse causes internalization of clusterin bound to  $A\beta$  causing a positive feedback loop. Recent work in APP/PS1 mice crossed with clusterin knockout mice demonstrates that the loss of clusterin shifts amyloid deposition to cerebrovasculature due to a shift in clearance to perivascular drainage pathways (Wojtas *et al.*, 2017). It is possible that our observed increased

localization of clusterin in synapses in Alzheimer's disease may have implications beyond local synaptic protein changes. Shifting subcellular clusterin localization could potentially impact on the wider neuro-glial vascular unit, but this requires further investigation.

It is possible that, similar to ApoE, clusterin has some effects by acting via A $\beta$  but other effects via downstream interactor molecules such as TREM2. These downstream effects may influence the cellular milieu of the Alzheimer's disease brain and be of greater importance to the overall neurodegeneration than the effects on A $\beta$  alone. It is entirely likely that clusterin has multiple roles in the brain and that these jobs depend in part upon subcellular localization of the protein. To fully understand the implications of this study, further investigation of the role of this important risk factor on the synaptic changes associated with A $\beta$  and Alzheimer's disease is required. The data presented here from human post-mortem brain tissue highlight the importance of studying synaptic effects of clusterin and its interactions with pathological proteins in Alzheimer's disease.

## Supplementary material

Supplementary material is available at *Brain Communications* online.

## Acknowledgements

We wish to thank the brain tissue donors and their families for their generous contributions to this research. Some of the control participants in the human study were from the Lothian Birth Cohort 1936, thus we wish to thank the cohort and research team supported by Age UK (Disconnected Mind project) in The University of Edinburgh Centre for Cognitive Ageing and Cognitive Epidemiology, funded by the Biotechnology and Biological Sciences Research Council (BBSRC) and Medical Research Council (MRC) (MR/K026992/1).

## Funding

This work was supported by the European Research Council (ALZSYN), the University of Edinburgh (Chancellor's Fellow start-up funding), Wellcome Trust Institutional Strategic Support Fund, MND Scotland and the UK Dementia Research Institute which receives its funding from DRILtd, funded by the UK Medical Research Council, Alzheimer's Society and Alzheimer's Research UK.

## Competing interests

T.L.S.-J. is a member of the Scientific Advisory Board of Cognition Therapeutics and has collaborative research grants

from two pharmaceutical companies. None of these companies had any influence over the current work.

## References

- Bayés À, Collins MO, Galtrey CM, Simonnet C, Roy M, Croning MD, et al. Human post-mortem synapse proteome integrity screening for proteomic studies of postsynaptic complexes. *Mol Brain* 2014; 7: 88.
- Cascella R, Conti S, Tatini F, Evangelisti E, Scartabelli T, Casamenti F, et al. Extracellular chaperones prevent Abeta42-induced toxicity in rat brains. *Biochimica et biophysica acta* 2013; 1832: 1217–26.
- Corder EH, Roses AD. No increased risk of the apolipoprotein E epsilon2 allele with early-onset Alzheimer's disease. *Ann Neurol* 1996; 39: 414–6.
- Corder EH, Saunders AM, Strittmatter WJ, Schmechel DE, Gaskell PC, Small GW, et al. Gene dose of apolipoprotein E type 4 allele and the risk of Alzheimer's disease in late onset families. *Science* 1993; 261: 921–3.
- Crimins JL, Pooler A, Polydoro M, Luebke JI, Spires-Jones TL. The intersection of amyloid beta and tau in glutamatergic synaptic dysfunction and collapse in Alzheimer's disease. *Ageing Res Rev* 2013; 12: 757–63.
- DeMattos RB, Cirrito JR, Parsadanian M, May PC, O'Dell MA, Taylor JW, et al. ApoE and clusterin cooperatively suppress Abeta levels and deposition: evidence that ApoE regulates extracellular Abeta metabolism in vivo. *Neuron* 2004; 41: 193–202.
- Desikan RS, Thompson WK, Holland D, Hess CP, Brewer JB, Zetterberg H, et al. The role of clusterin in amyloid-beta-associated neurodegeneration. *JAMA Neurol* 2014; 71: 180–7.
- Dong HK, Gim JA, Yeo SH, Kim HS. Integrated late onset Alzheimer's disease (LOAD) susceptibility genes: cholesterol metabolism and trafficking perspectives. *Gene* 2017; 597: 10–6.
- Foster EM, Dangla-Valls A, Lovestone S, Ribe EM, Buckley NJ. Clusterin in Alzheimer's disease: mechanisms, genetics, and lessons from other pathologies. *Front Neurosci* 2019; 13: 164.
- Guerreiro R, Wojtas A, Bras J, Carrasquillo M, Rogava E, Majounie E, et al. TREM2 variants in Alzheimer's disease. *N Engl J Med* 2013; 368: 117–27.
- Hakkoum D, Imhof A, Vallet PG, Boze H, Moulin G, Charnay Y, et al. Clusterin increases post-ischemic damages in organotypic hippocampal slice cultures. *J Neurochem* 2008; 106: 1791–803.
- Harold D, Abraham R, Hollingworth P, Sims R, Gerrish A, Hamshere ML, et al. Genome-wide association study identifies variants at CLU and PICALM associated with Alzheimer's disease. *Nat Genet* 2009; 41: 1088–93.
- Kay KR, Smith C, Wright AK, Serrano-Pozo A, Pooler AM, Koffie R, et al. Studying synapses in human brain with array tomography and electron microscopy. *Nat Protoc* 2013; 8: 1366–80.
- Killick R, Ribe EM, Al-Shawi R, Malik B, Hooper C, Fernandes C, et al. Clusterin regulates beta-amyloid toxicity via Dickkopf-1-driven induction of the wnt-PCP-JNK pathway. *Mol Psychiatry* 2014; 19: 88–98.
- Koffie RM, Hashimoto T, Tai HC, Kay KR, Serrano-Pozo A, Joyner D, et al. Apolipoprotein E4 effects in Alzheimer's disease are mediated by synaptotoxic oligomeric amyloid-beta. *Brain* 2012; 135: 2155–68.
- Koffie RM, Meyer-Luehmann M, Hashimoto T, Adams KW, Mielke ML, Garcia-Alloza M, et al. Oligomeric amyloid beta associates with postsynaptic densities and correlates with excitatory synapse loss near senile plaques. *Proc Natl Acad Sci USA* 2009; 106: 4012–7.
- Lim YY, Villemagne VL, Laws SM, Pietrzak RH, Snyder PJ, Ames D, et al. APOE and BDNF polymorphisms moderate amyloid beta-related cognitive decline in preclinical Alzheimer's disease. *Mol Psychiatry* 2015; 20: 1322–8.
- Micheva KD, Busse B, Weiler NC, O'Rourke N, Smith SJ. Single-synapse analysis of a diverse synapse population: proteomic imaging methods and markers. *Neuron* 2010; 68: 639–53.

- Miners JS, Clarke P, Love S. Clusterin levels are increased in Alzheimer's disease and influence the regional distribution of A $\beta$ . *Brain Pathol* 2017; 27: 305–13.
- Mulder SD, Nielsen HM, Blankenstein MA, Eikelenboom P, Veerhuis R. Apolipoproteins E and J interfere with amyloid-beta uptake by primary human astrocytes and microglia in vitro. *Glia* 2014; 62: 493–503.
- Nuutinen T, Suuronen T, Kauppinen A, Salminen A. Clusterin: a forgotten player in Alzheimer's disease. *Brain Res Rev* 2009; 61: 89–104.
- Park S, Mathis KW, Lee IK. The physiological roles of apolipoprotein J/clusterin in metabolic and cardiovascular diseases. *Rev Endocr Metab Disord* 2014; 15: 45–53.
- Rebeck GW, Reiter JS, Strickland DK, Hyman BT. Apolipoprotein E in sporadic Alzheimer's disease: allelic variation and receptor interactions. *Neuron* 1993; 11: 575–80.
- Riddell DR, Zhou H, Atchison K, Warwick HK, Atkinson PJ, Jefferson J, et al. Impact of apolipoprotein E (ApoE) polymorphism on brain ApoE levels. *J Neurosci* 2008; 28: 11445–53.
- Schiepers OJ, Harris SE, Gow AJ, Pattie A, Brett CE, Starr JM, et al. APOE E4 status predicts age-related cognitive decline in the ninth decade: longitudinal follow-up of the Lothian Birth Cohort 1921. *Mol Psychiatry* 2012; 17: 315–24.
- Spires-Jones TL, Hyman BT. The intersection of amyloid beta and tau at synapses in Alzheimer's disease. *Neuron* 2014; 82: 756–71.
- Stone DJ, Rozovsky I, Morgan TE, Anderson CP, Finch CE. Increased synaptic sprouting in response to estrogen via an apolipoprotein E-dependent mechanism: implications for Alzheimer's disease. *J Neurosci* 1998; 18: 3180–5.
- Tai HC, Serrano-Pozo A, Hashimoto T, Frosch MP, Spires-Jones TL, Hyman BT. The synaptic accumulation of hyperphosphorylated tau oligomers in Alzheimer disease is associated with dysfunction of the ubiquitin-proteasome system. *Am J Pathol* 2012; 181: 1426–35.
- Thevenaz P, Ruttimann UE, Unser M. A pyramid approach to subpixel registration based on intensity. *IEEE Trans Image Process* 1998; 7: 27–41.
- Tzioras M, Davies C, Newman A, Jackson R, Spires-Jones T. APOE at the interface of inflammation, neurodegeneration and pathological protein spread in Alzheimer's disease. *Neuropathol Appl Neurobiol* 2019; 45: 327–46.
- Yang AM, O'Malley TT, Kanmert D, Jerecic J, Zieske LR, Zetterberg H, et al. A highly sensitive novel immunoassay specifically detects low levels of soluble A $\beta$  oligomers in human cerebrospinal fluid. *Alzheimers Res Ther*. 2015; 7: 14.
- Wojtas AM, Kang SS, Olley BM, Gatherer M, Shinohara M, Lozano PA, et al. Loss of clusterin shifts amyloid deposition to the cerebrovasculature via disruption of perivascular drainage pathways. *Proc Natl Acad Sci USA* 2017; 114: E6962–71.