



**University of Dundee**

## **Engineered IL-10 variants elicit potent immunomodulatory effects at low ligand doses**

Gorby, Claire; Sotolongo Bellón, Junel; Wilmes, Stephan; Warda, Walid; Pohler, Elizabeth; Fyfe, Paul K.

*Published in:*  
Science Signaling

*DOI:*  
[10.1126/scisignal.abc0653](https://doi.org/10.1126/scisignal.abc0653)

*Publication date:*  
2020

*Document Version*  
Peer reviewed version

[Link to publication in Discovery Research Portal](#)

### *Citation for published version (APA):*

Gorby, C., Sotolongo Bellón, J., Wilmes, S., Warda, W., Pohler, E., Fyfe, P. K., Cozzani, A., Ferrand, C., Walter, M. R., Mitra, S., Piehler, J., & Moraga, I. (2020). Engineered IL-10 variants elicit potent immunomodulatory effects at low ligand doses. *Science Signaling*, 13(649), Article eabc0653. <https://doi.org/10.1126/scisignal.abc0653>

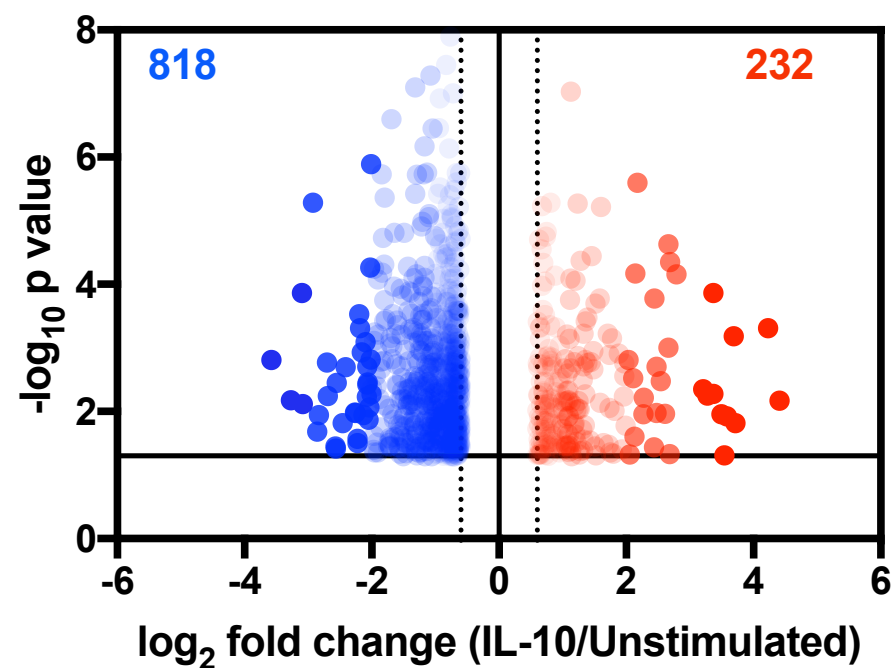
### **General rights**

Copyright and moral rights for the publications made accessible in Discovery Research Portal are retained by the authors and/or other copyright owners and it is a condition of accessing publications that users recognise and abide by the legal requirements associated with these rights.

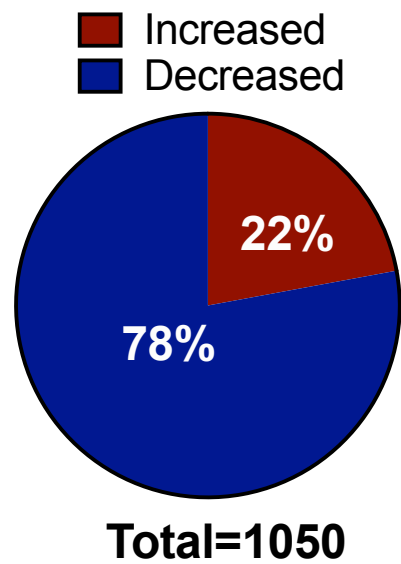
### **Take down policy**

If you believe that this document breaches copyright please contact us providing details, and we will remove access to the work immediately and investigate your claim.

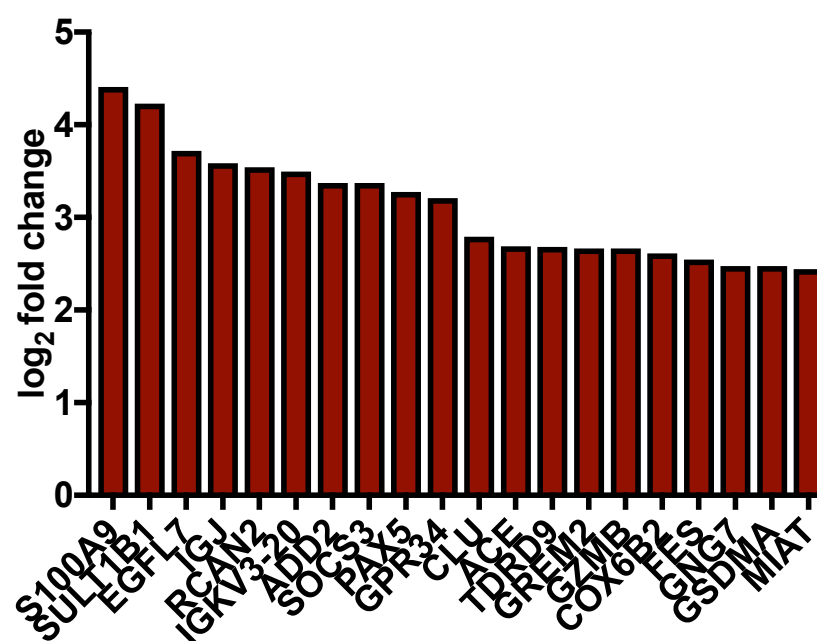
a) **WTD vs Unstimulated (50 nM)**



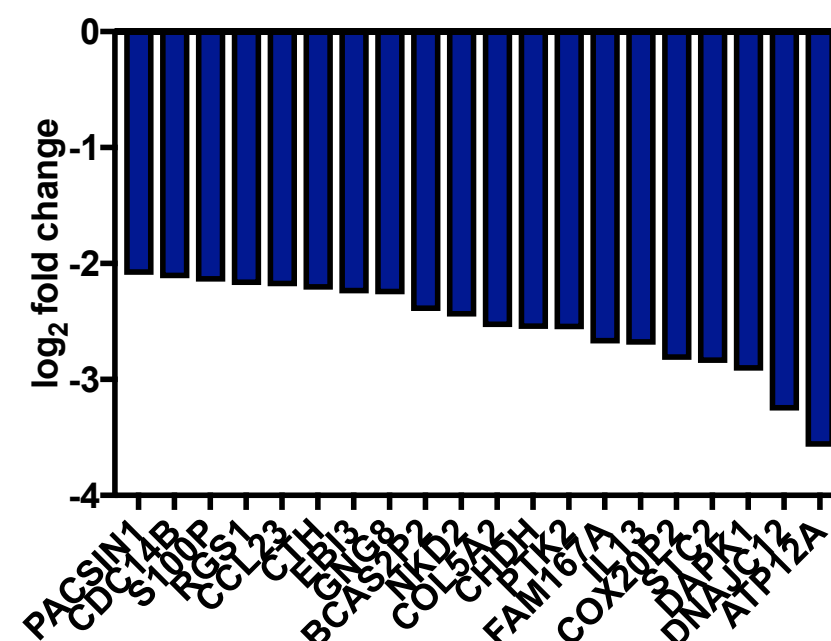
b)



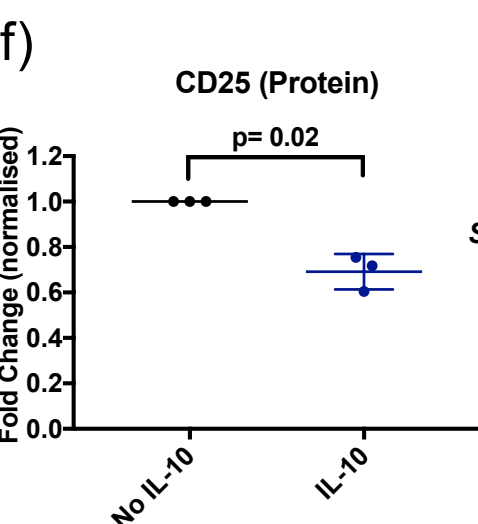
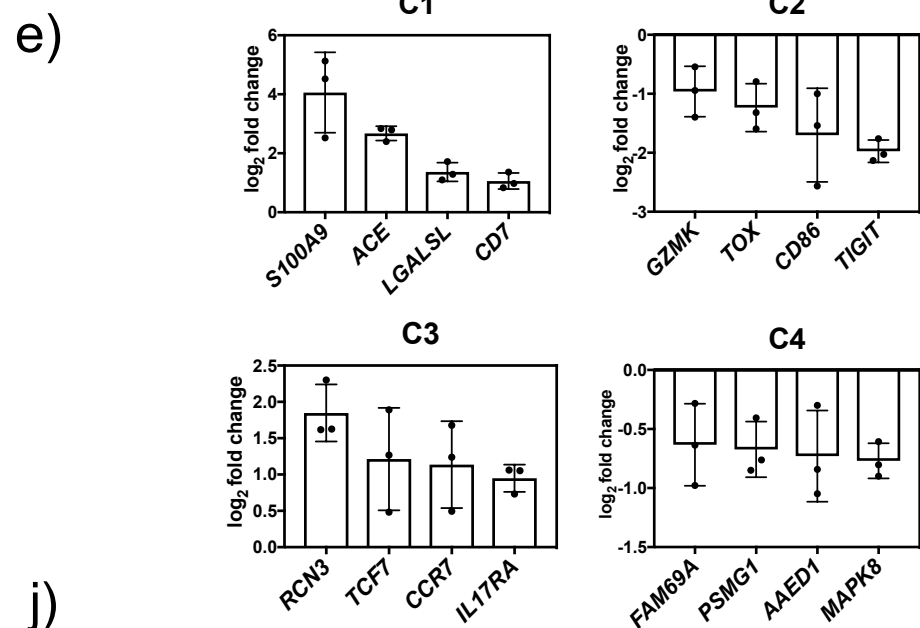
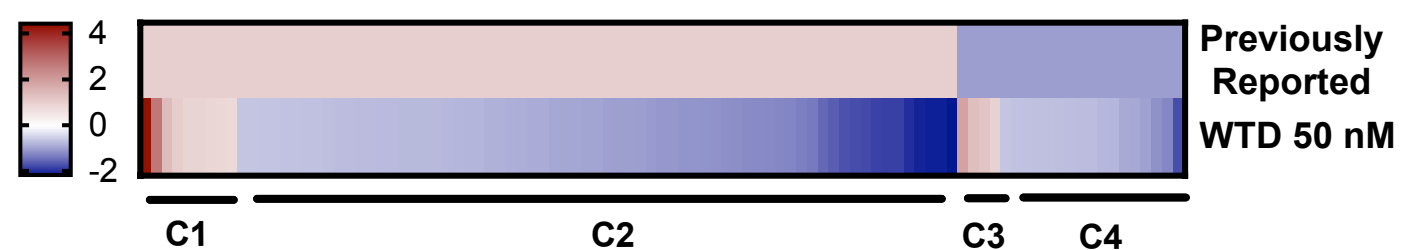
c) **Top 20 Genes with Increased Expression**



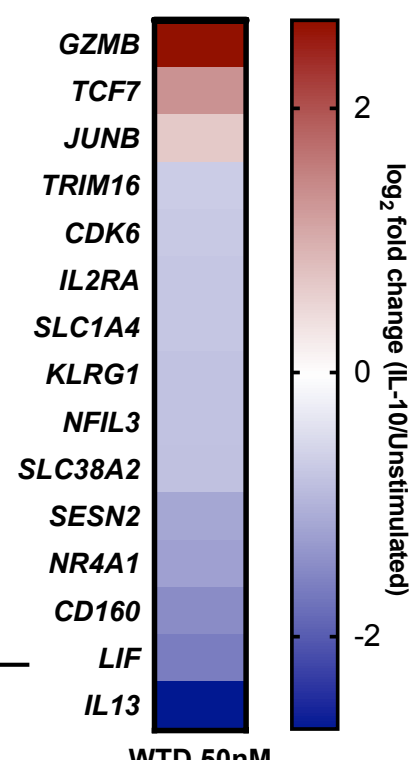
**Top 20 Genes with Decreased Expression**



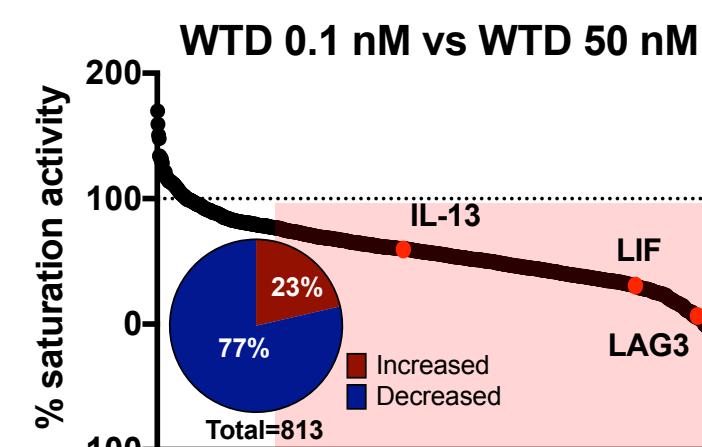
d) **T Cell Exhaustion Signature**



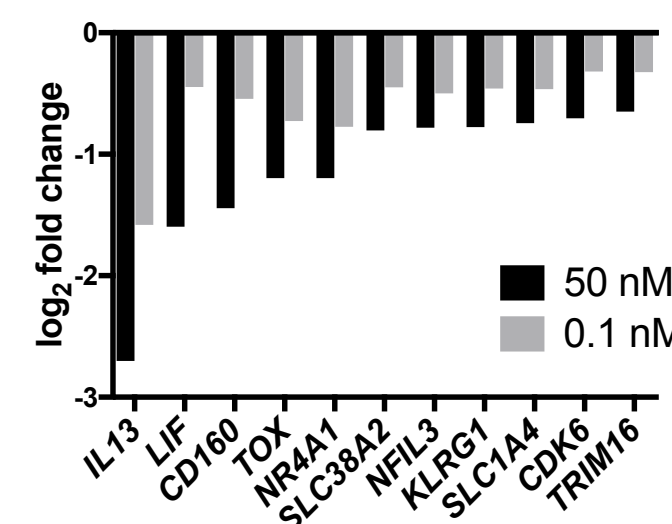
g) **IL-2 Signature**



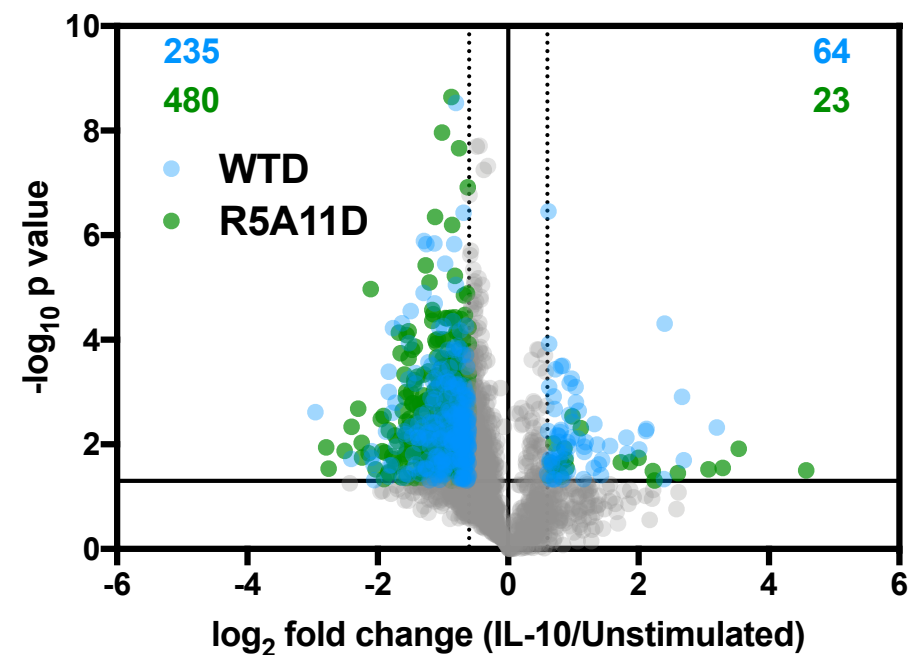
h) **WTD 0.1 nM vs WTD 50 nM**



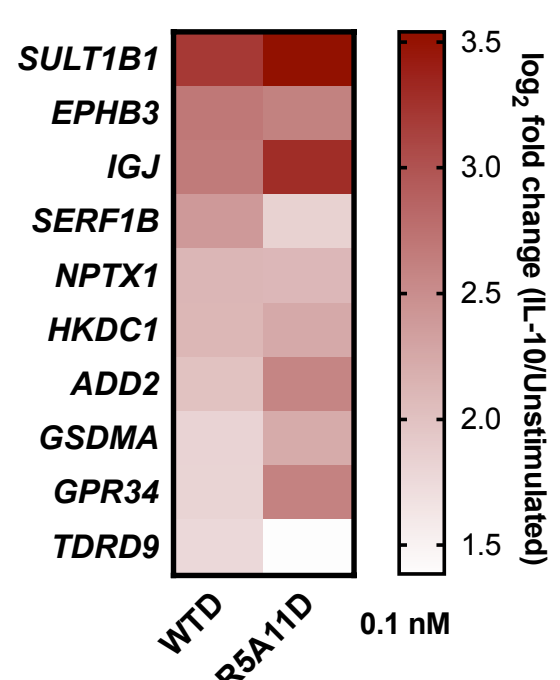
i) **Exhaustion and IL-2 Signature**



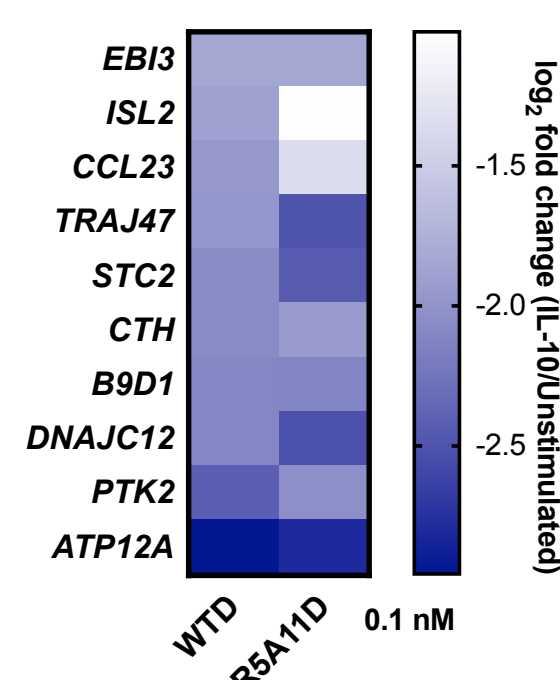
j) **R5A11D vs WTD (0.1 nM)**



k) **Top 10 Genes with Increased Expression**



**Top 10 Genes with Decreased Expression**



l) **R5A11D vs WTD**

