

University of Dundee

## Processes Underlying Glycemic Deterioration in Type 2 Diabetes

IMI DIRECT Consortium; Bizzotto, Roberto; Jennison, Christopher; Jones, Angus G.; Kurbasic, Azra; Tura, Andrea

*Published in:*  
Diabetes Care

*DOI:*  
[10.2337/dc20-1567](https://doi.org/10.2337/dc20-1567)

*Publication date:*  
2021

*Document Version*  
Peer reviewed version

[Link to publication in Discovery Research Portal](#)

### *Citation for published version (APA):*

IMI DIRECT Consortium, Bizzotto, R., Jennison, C., Jones, A. G., Kurbasic, A., Tura, A., Kennedy, G., Bell, J. D., Thomas, E. L., Frost, G., Eriksen, R., Koivula, R. W., Brage, S., Kaye, J., Hattersley, A. T., Heggie, A., McEvoy, D., 't Hart, L. M., Beulens, J. W., ... Mari, A. (2021). Processes Underlying Glycemic Deterioration in Type 2 Diabetes: An IMI DIRECT Study. *Diabetes Care*, *44*(2), 511-518. Advance online publication. <https://doi.org/10.2337/dc20-1567>

### **General rights**

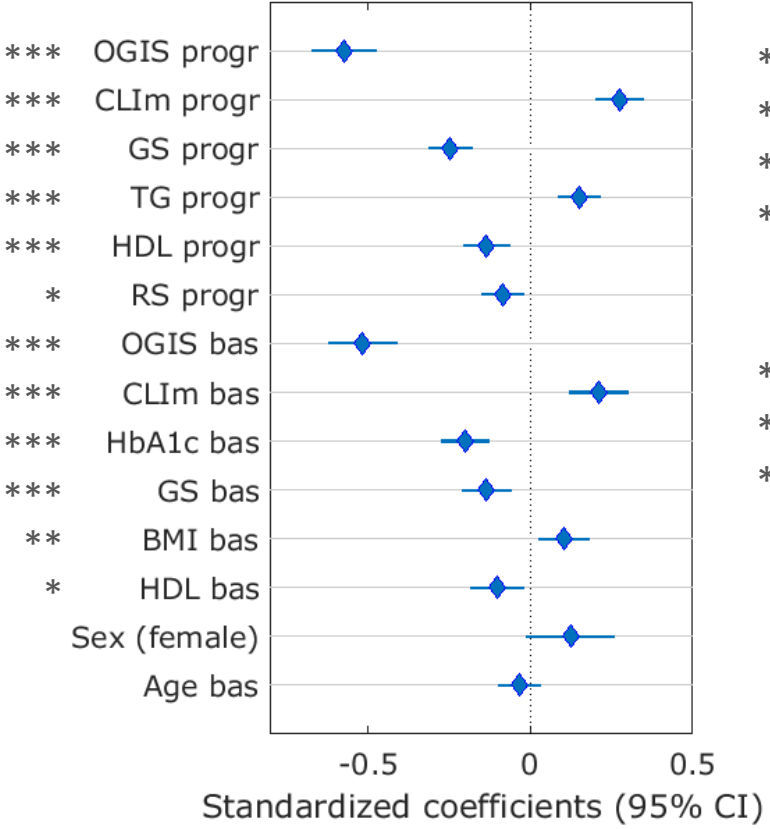
Copyright and moral rights for the publications made accessible in Discovery Research Portal are retained by the authors and/or other copyright owners and it is a condition of accessing publications that users recognise and abide by the legal requirements associated with these rights.

- Users may download and print one copy of any publication from Discovery Research Portal for the purpose of private study or research.
- You may not further distribute the material or use it for any profit-making activity or commercial gain.
- You may freely distribute the URL identifying the publication in the public portal.

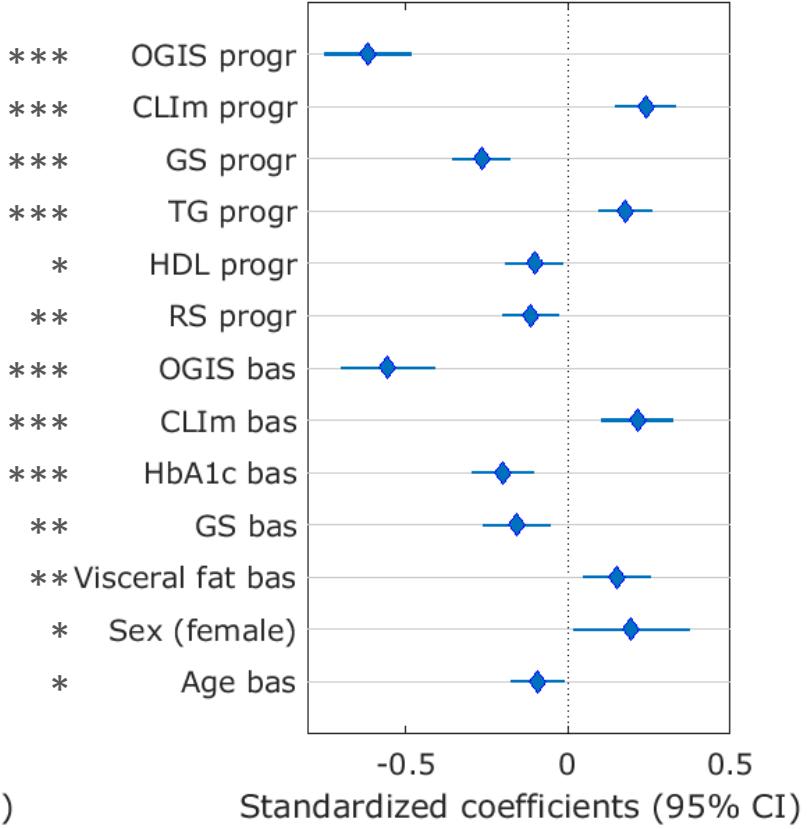
### **Take down policy**

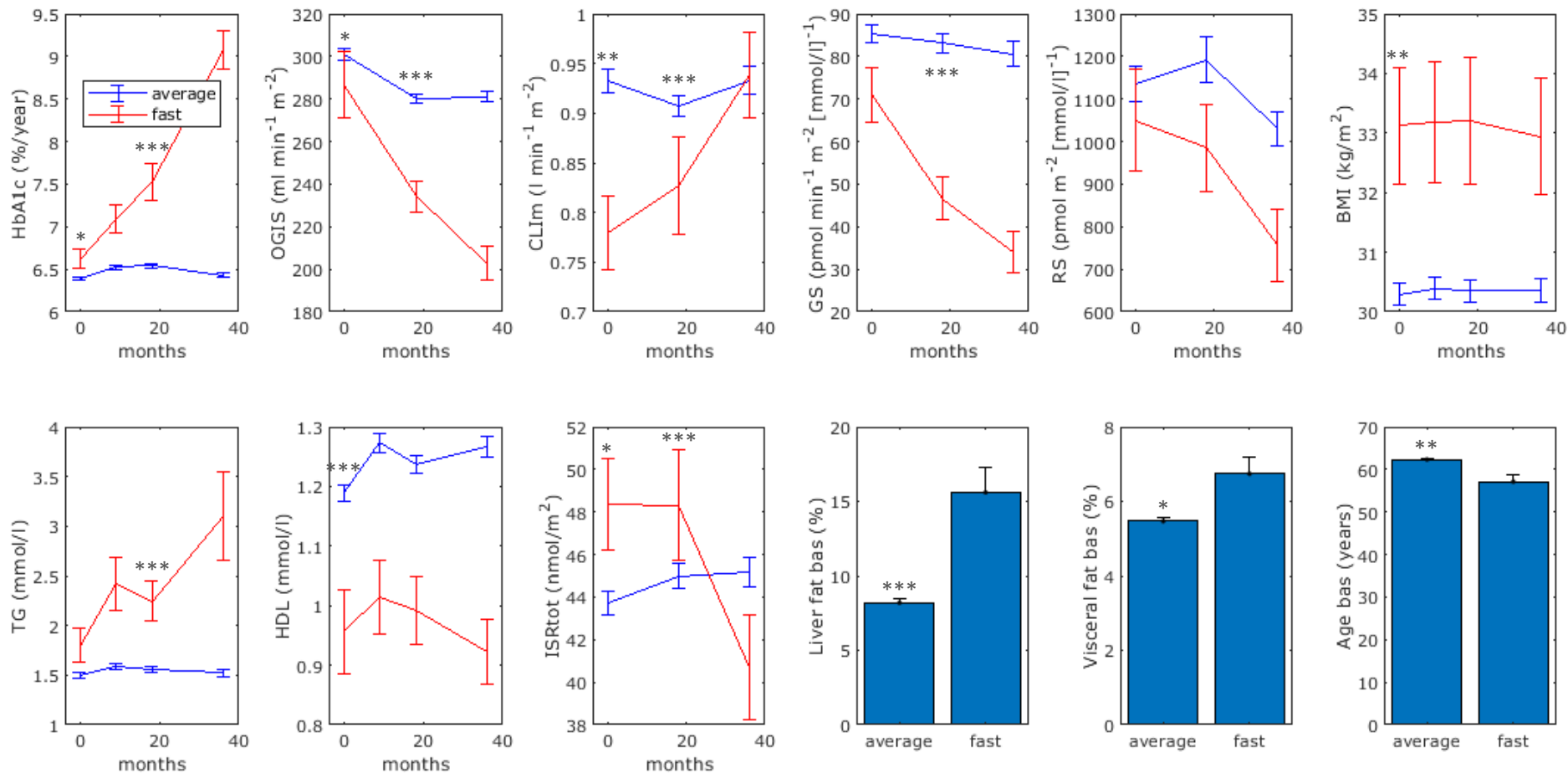
If you believe that this document breaches copyright please contact us providing details, and we will remove access to the work immediately and investigate your claim.

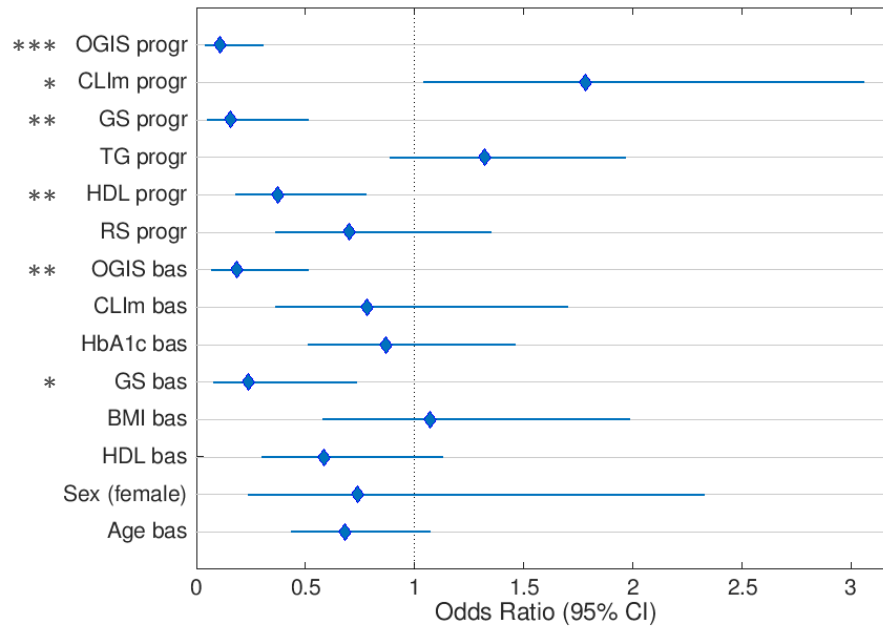
A



B







AUROC [95% CI]	Sensitivity	Specificity	Accuracy
0.94 [0.87-0.97]	0.84	0.93	0.92