



**University of Dundee**

**Trends in Mortality Due to Myocardial Infarction, Stroke, and Pulmonary Embolism in Patients Receiving Dialysis**

Ocak, Gurbey; Boenink, Rianne; Noordzij, Marlies; Bos, Willem Jan W.; Vikse, Bjorn E.; Cases, Aleix

*Published in:*  
JAMA Network Open

*DOI:*  
[10.1001/jamanetworkopen.2022.7624](https://doi.org/10.1001/jamanetworkopen.2022.7624)

*Publication date:*  
2022

*Document Version*  
Other version

[Link to publication in Discovery Research Portal](#)

*Citation for published version (APA):*

Ocak, G., Boenink, R., Noordzij, M., Bos, W. J. W., Vikse, B. E., Cases, A., Kerschbaum, J., Helve, J., Nordio, M., Arici, M., Mercadal, L., Wanner, C., Palsson, R., Hommel, K., de Meester, J., Kostopoulou, M., Santamaria, R., Rodrigo, E., Rydell, H., ... Kramer, A. (2022). Trends in Mortality Due to Myocardial Infarction, Stroke, and Pulmonary Embolism in Patients Receiving Dialysis. *JAMA Network Open*, 5(4), Article e227624. <https://doi.org/10.1001/jamanetworkopen.2022.7624>

**General rights**

Copyright and moral rights for the publications made accessible in Discovery Research Portal are retained by the authors and/or other copyright owners and it is a condition of accessing publications that users recognise and abide by the legal requirements associated with these rights.

**Take down policy**

If you believe that this document breaches copyright please contact us providing details, and we will remove access to the work immediately and investigate your claim.

## **Supplemental files LEGENDS**

Supplemental eFigure 1. Age and sex distribution of dialysis patients and the general population

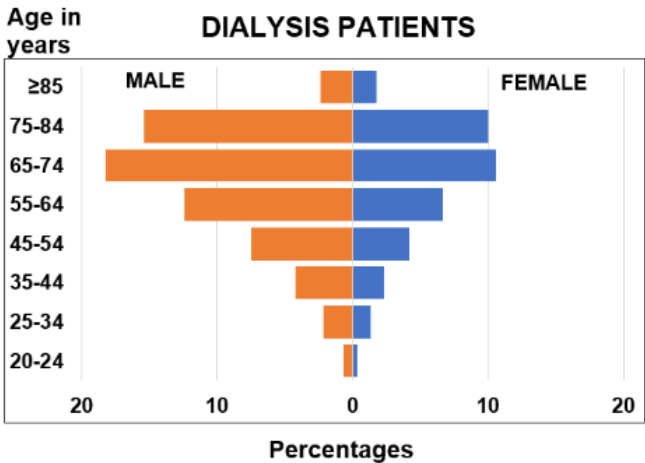
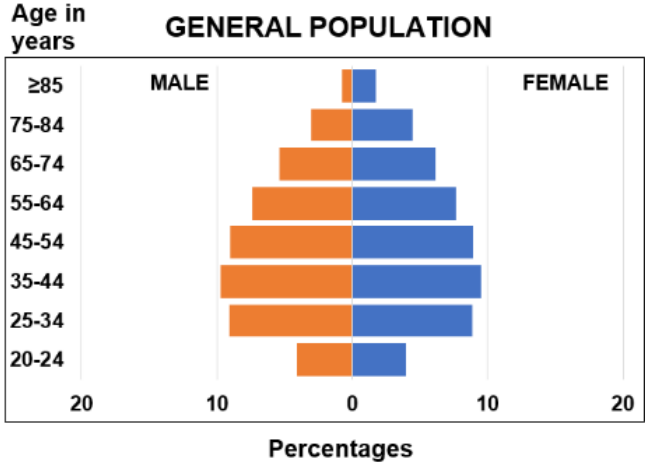
Supplemental eFigure 2. Incidence of fatal myocardial infarction in dialysis patients and the general population

Supplemental eFigure 3. Incidence of fatal stroke in dialysis patients and the general population

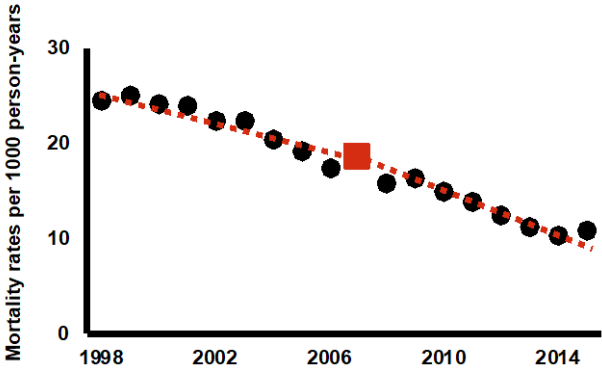
Supplemental eFigure 4. Incidence of fatal pulmonary embolism in dialysis patients and the general population

Supplemental eFigure 5. Incidence of causes of death other than myocardial infarction, stroke and pulmonary embolism in dialysis patients and the general population

**Supplemental eFigure 1. Age and sex distribution of dialysis patients and the general population**



**Supplemental eFigure 2. Incidence of fatal myocardial infarction in dialysis patients and the general population**



**DIALYSIS PATIENTS**

PERIOD	ANNUAL PERCENTAGE CHANGE
1998-2007	-4.0 (95% CI -5.3; -2.7)
2007-2015	-6.9 (95% CI -8.4; -5.4)

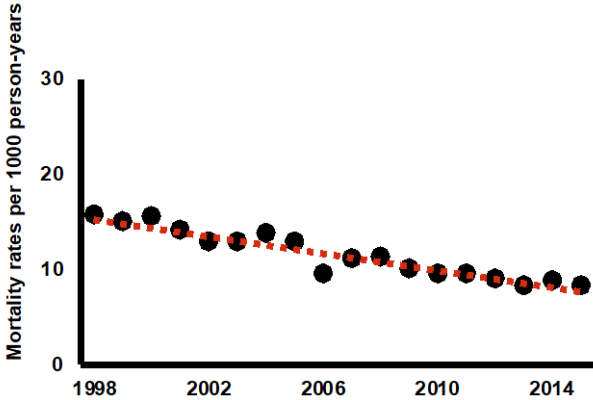


**GENERAL POPULATION**

PERIOD	ANNUAL PERCENTAGE CHANGE
1998-2002	-3.8 (95% CI -5.0; -2.5)
2002-2015	-5.3 (95% CI -5.5; -5.1)

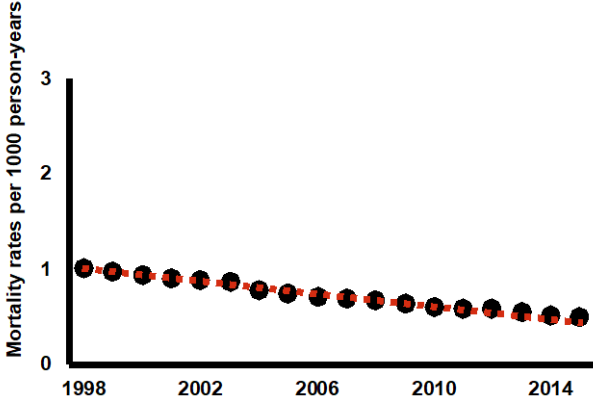
Squares represent joinpoints.

**Supplemental eFigure 3. Incidence of fatal stroke in dialysis patients and the general population**



**DIALYSIS PATIENTS**

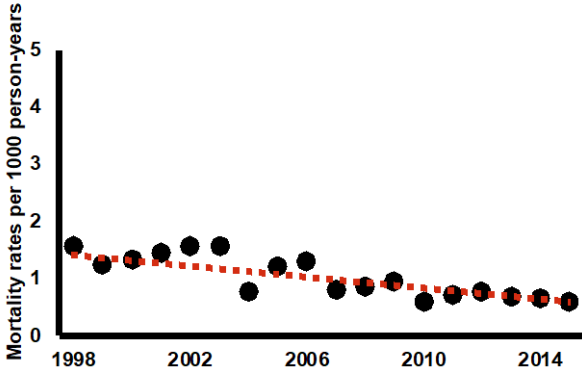
PERIOD	ANNUAL PERCENTAGE CHANGE
1998-2015	-3.9 (95% CI -4.5; -3.3)



**GENERAL POPULATION**

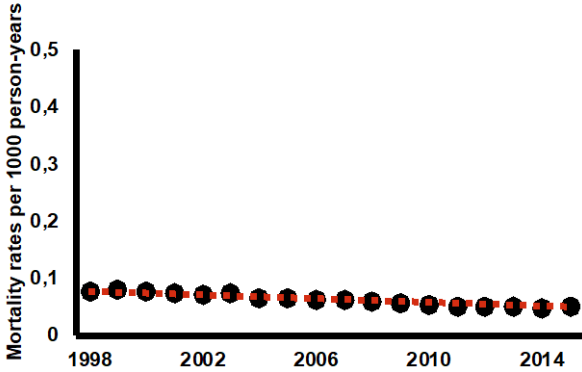
PERIOD	ANNUAL PERCENTAGE CHANGE
1998-2015	-4.1 (95% CI -4.3; -3.9)

**Supplemental eFigure 4. Incidence of fatal pulmonary embolism in dialysis patients and the general population**



**DIALYSIS PATIENTS**

**PERIOD    ANNUAL PERCENTAGE CHANGE**  
1998-2015    -5.6 (95% CI -7.2; -3.9)



**GENERAL POPULATION**

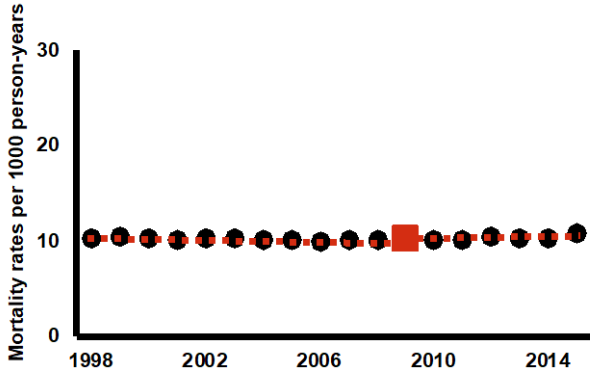
**PERIOD    ANNUAL PERCENTAGE CHANGE**  
1998-2015    -3.2 (95% CI -3.4; -2.9)

**Supplemental eFigure 5. Incidence of causes of death other than myocardial infarction, stroke and pulmonary embolism in dialysis patients and the general population**



**DIALYSIS PATIENTS**

PERIOD	ANNUAL PERCENTAGE CHANGE
1998-2003	1.0 (95% CI -0.3; 2.3)
2003-2015	-0.9 (95% CI -1.2; -0.5)



**GENERAL POPULATION**

PERIOD	ANNUAL PERCENTAGE CHANGE
1998-2009	-0.3 (95% CI -0.5; 0.0)
2009-2015	1.0 (95% CI 0.3; 1.7)

Squares represent joinpoints.