



University of Dundee

Identification of coronavirus particles by electron microscopy

Havaki, Sophia; Evangelou, Konstantinos; Paschalaki, Koralia; Petty, Russell; Barnes, Peter J.; Gorgoulis, Vassilis G.

Published in:
European Respiratory Journal

DOI:
[10.1183/13993003.00754-2022](https://doi.org/10.1183/13993003.00754-2022)

Publication date:
2022

Licence:
CC BY-NC

Document Version
Publisher's PDF, also known as Version of record

[Link to publication in Discovery Research Portal](#)

Citation for published version (APA):

Havaki, S., Evangelou, K., Paschalaki, K., Petty, R., Barnes, P. J., & Gorgoulis, V. G. (2022). Identification of coronavirus particles by electron microscopy: a complementary tool for deciphering COVID-19. *European Respiratory Journal*, 60(3), Article 2200754. Advance online publication. <https://doi.org/10.1183/13993003.00754-2022>

General rights

Copyright and moral rights for the publications made accessible in Discovery Research Portal are retained by the authors and/or other copyright owners and it is a condition of accessing publications that users recognise and abide by the legal requirements associated with these rights.

- Users may download and print one copy of any publication from Discovery Research Portal for the purpose of private study or research.
- You may not further distribute the material or use it for any profit-making activity or commercial gain.
- You may freely distribute the URL identifying the publication in the public portal.

Take down policy

If you believe that this document breaches copyright please contact us providing details, and we will remove access to the work immediately and investigate your claim.



Reply: Identification of coronavirus particles by electron microscopy: a complementary tool for deciphering COVID-19

Copyright ©The authors 2022.

This version is distributed under the terms of the Creative Commons Attribution Non-Commercial Licence 4.0. For commercial reproduction rights and permissions contact permissions@ersnet.org

Received: 8 April 2022
Accepted: 13 April 2022

Reply to C. Dittmayer and M. Laue:

We thank C. Dittmayer and M. Laue for giving us the opportunity to clarify issues regarding the identification of coronavirus (CV) particles by electron microscopy (EM) demonstrated in our recent publication [1]. We would like to respond to the authors' statements, as follows:

Having a significant experience in EM for more than 20 years, we are well aware of the ultrastructural features of all cellular organelles and their potential distortion by artefacts, and also of the ultrastructural characteristics of viruses, including those of CVs in infected cells and tissues, as they have been extensively described [2–5].

Regarding the experimental approach followed in our investigation [1], tissue samples applied for EM were selectively removed, under the guidance of haematoxylin and eosin stained section, from formalin-fixed paraffin embedded (FFPE) autopsy lung tissue blocks. Subsequently, they were deparaffinised and re-embedded in epoxy resins according to standard EM procedure. Indeed, the ultrastructural features of the tissue were not well preserved, as foreseen, due to the fact that tissue samples underwent the process of embedding in paraffin and additional treatment during deparaffinisation, dehydration, infiltration and finally re-embedding in epoxy resins [2]. Another fact that influences the proper evaluation of the ultrastructural features in the current setting stems from the limited availability and rareness of the examined paraffin-embedded COVID-19 lung autopsies, which did not allow the repetition of the procedure, as often happens in EM, nor the direct embedding of the autopsy material in epoxy resins.

In this context, the ultrastructure of CV particles might also be affected and may not reveal all the established morphological features, as also supported by BULLOCK *et al.* [2] in their 2021 study and KRASEMANN *et al.* [6] in preprint form. In our study [1], as seen in figure 1c (panels iv and v), the CV particles, in the proximity of endoplasmic reticulum (ER) and in vacuole, respectively, have a partially visible biomembrane, while a surrounding fuzz is apparent in all CV particles (figure 1c, panels iv–vi), which is suggestive of peplomers or spikes. Actually, spikes are better visualised with thin sectioning of formalin or glutaraldehyde fixed tissue for EM when *en bloc* staining with tannic acid and uranyl acetate precedes tissue embedding in epoxy resins [2, 6]. Moreover, without any doubt, the CV particles are definitely located in the proximity of ER (figure 1c, panel iv) and in vacuoles (figure 1c, panels v and vi) and despite the poorly preserved ultrastructure, they are not misinterpreted with other artificially altered structures, such as swollen mitochondria or a deteriorated multivesicular body, as is for instance evident in figure 1c (panel v) above the vacuole with two CV particles. A criterion that is not met in the depicted cell is the presence of numerous, similarly shaped CV particles. However, this might be due to the low viral load of the particular cell. According to KRASEMANN *et al.* [6], in SARS-CoV-2 infected type 2 pneumocytes of formalin-fixed autopsy lung processed for EM (but not deparaffinised), a wide range of intracellular virus load per sectioned cell profile was observed (range 4–620 intracellular particles), “rendering a huge difference in the likelihood of particle detection”.



Shareable abstract (@ERSpublications)

Identification of coronavirus particles by electron microscopy: a complementary tool for deciphering COVID-19 <https://bit.ly/3Kk5PT8>

Cite this article as: Hawaki S, Evangelou K, Paschalaki K, *et al.* Reply: Identification of coronavirus particles by electron microscopy: a complementary tool for deciphering COVID-19. *Eur Respir J* 2022; 60: 2200754 [DOI: 10.1183/13993003.00754-2022].

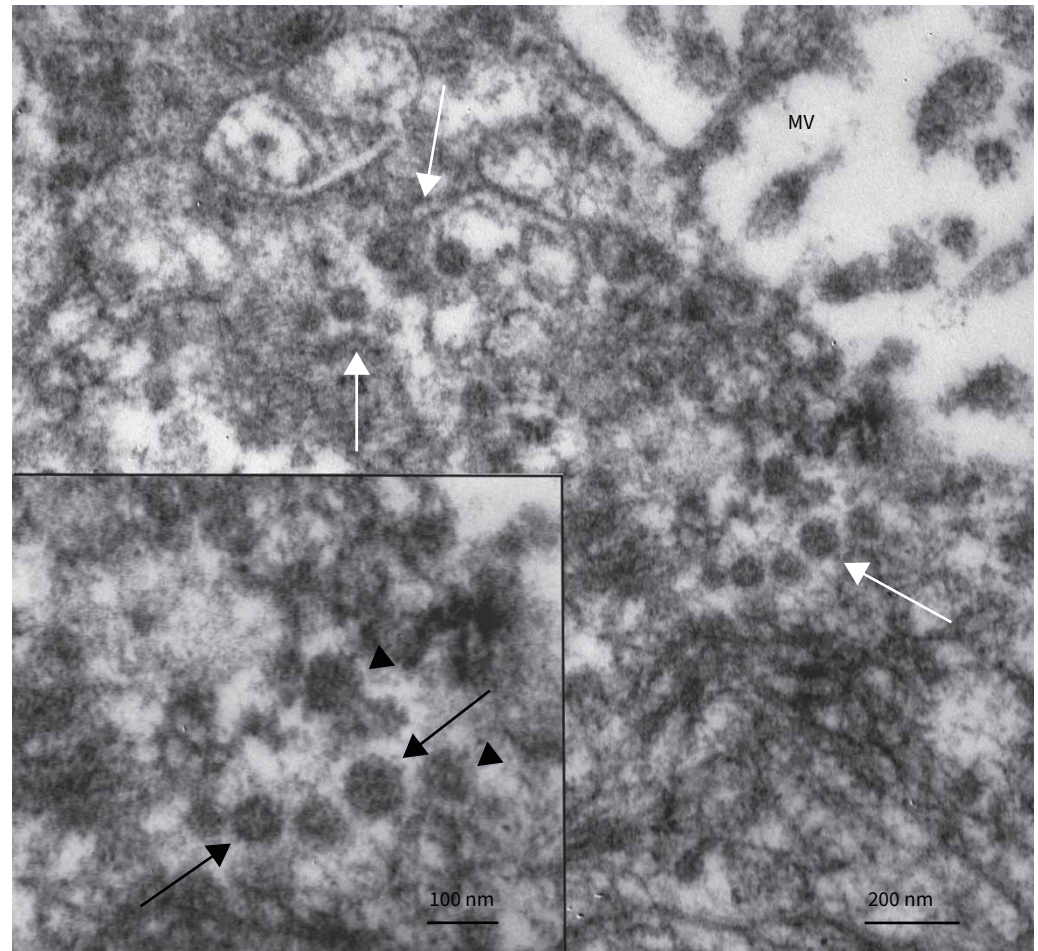


FIGURE 1 Electron micrograph of a SARS-CoV-2 infected AT2 cell of a paraffin-embedded lung autopsy which was deparaffinised and re-embedded for electron microscopy. Coronavirus particles with electron-dense appearance are gathered in vesicular formations (white arrows) near the cell surface. Inset: higher magnification of a group of virions. Biomembrane is partially visible around some of the particles (arrowheads), while surface projections, indicating spikes, are observed occasionally around others (black arrows). MV: microvilli.

In our study, the particular depicted cell was selected in order to be in correspondence with the demarcated cell in the semi-thin section (figure 1c, panel i). Following additional examination of the same sample in another AT2 infected cell, similarly shaped CV particles grouped in vesicles, adjacent to the cell surface, were identified (figure 1). They meet all the ultrastructural criteria of deparaffinised and re-processed tissue for EM, such as electron-dense appearance, partially visible biomembrane (figure 1, arrowheads), and surface projections in some of them (figure 1, arrows), rendering their identification indisputable.

However, the main message of the study of EVANGELOU *et al.* [1] is the SARS-CoV-2-induced cellular senescence correlated with a proinflammatory phenotype, COVID-19 disease outcome and viral mutagenesis. The use of EM was a redundant experimental approach that was conducted complementary to the main methodology for SARS-CoV-2 detection, with a prospect to identify CV particles, despite the considered technical limitations. The validity of the scientific concept has been extensively proven at the experimental level, with molecular (RT-PCR), *in situ* (immunohistochemistry) and *in vitro* assays (Vero cells and alveospheres infection), providing overall novel insights of the underlying cellular mechanisms occurring in COVID-19 disease. In our opinion, our work should be regarded under the latter conceptual prism.

Sophia Havaki^{1,5}, Konstantinos Evangelou^{1,5}, Koralia Paschalaki², Russell Petty³, Peter J. Barnes² and Vassilis G. Gorgoulis^{1,3,4}

¹Molecular Carcinogenesis Group, Department of Histology and Embryology, Medical School, National and Kapodistrian University of Athens, Athens, Greece. ²National Heart and Lung Institute, Imperial College London, London, UK. ³Ninewells Hospital and Medical School, University of Dundee, Dundee, UK. ⁴Faculty Institute for Cancer Sciences, Manchester Academic Health Sciences Centre, University of Manchester, Manchester, UK. ⁵Contributed equally.

Corresponding author: Vassilis G. Gorgoulis (vgorg@med.uoa.gr)

Acknowledgement: The supplementary ultrastructural study was supported by the research project entitled: “Centre of Innovative Electron Microscopy Applications and Services of National and Kapodistrian University of Athens (CEMA)” funded by the Hellenic Foundation for Research and Innovation (HFRI) (project number 2906).

Conflict of interest: P.J. Barnes receives research funding from AstraZeneca and Boehringer Ingelheim, and is a scientific advisor to AstraZeneca, Boehringer Ingelheim, Epi-Endo, Novartis, Pieris and Teva. The other authors wish to declare no conflict of interest.

References

- 1 Evangelou K, Veroutis D, Paschalaki K, *et al.* Pulmonary infection by SARS-CoV-2 induces senescence accompanied by an inflammatory phenotype in severe COVID-19: possible implications for viral mutagenesis. *Eur Respir J* 2022; 60: 2102951.
- 2 Bullock HA, Goldsmith CS, Zaki SR, *et al.* Difficulties in differentiating coronaviruses from subcellular structures in human tissues by electron microscopy. *Emerg Infect Dis* 2021; 27: 1023–1031.
- 3 Bullock HA, Goldsmith CS, Miller SE. Best practices for correctly identifying coronavirus by transmission electron microscopy. *Kidney Int* 2021; 99: 824–827.
- 4 Hopfer H, Herzig MC, Gosert R, *et al.* Hunting coronavirus by transmission electron microscopy – a guide to SARS-CoV-2-associated ultrastructural pathology in COVID-19 tissues. *Histopathology* 2021; 78: 358–370.
- 5 Goldsmith CS, Tatti KM, Ksiazek TG, *et al.* Ultrastructural characterization of SARS coronavirus. *Emerg Infect Dis* 2004; 10: 320–326.
- 6 Krasemann S, Dittmayer C, Stillfried SV, *et al.* Assessing and improving the validity of COVID-19 autopsy studies - a multicenter approach to establish essential standards for immunohistochemical and ultrastructural analyses. *medRxiv* 2022; preprint [<https://doi.org/10.1101/2022.01.13.22269205>].